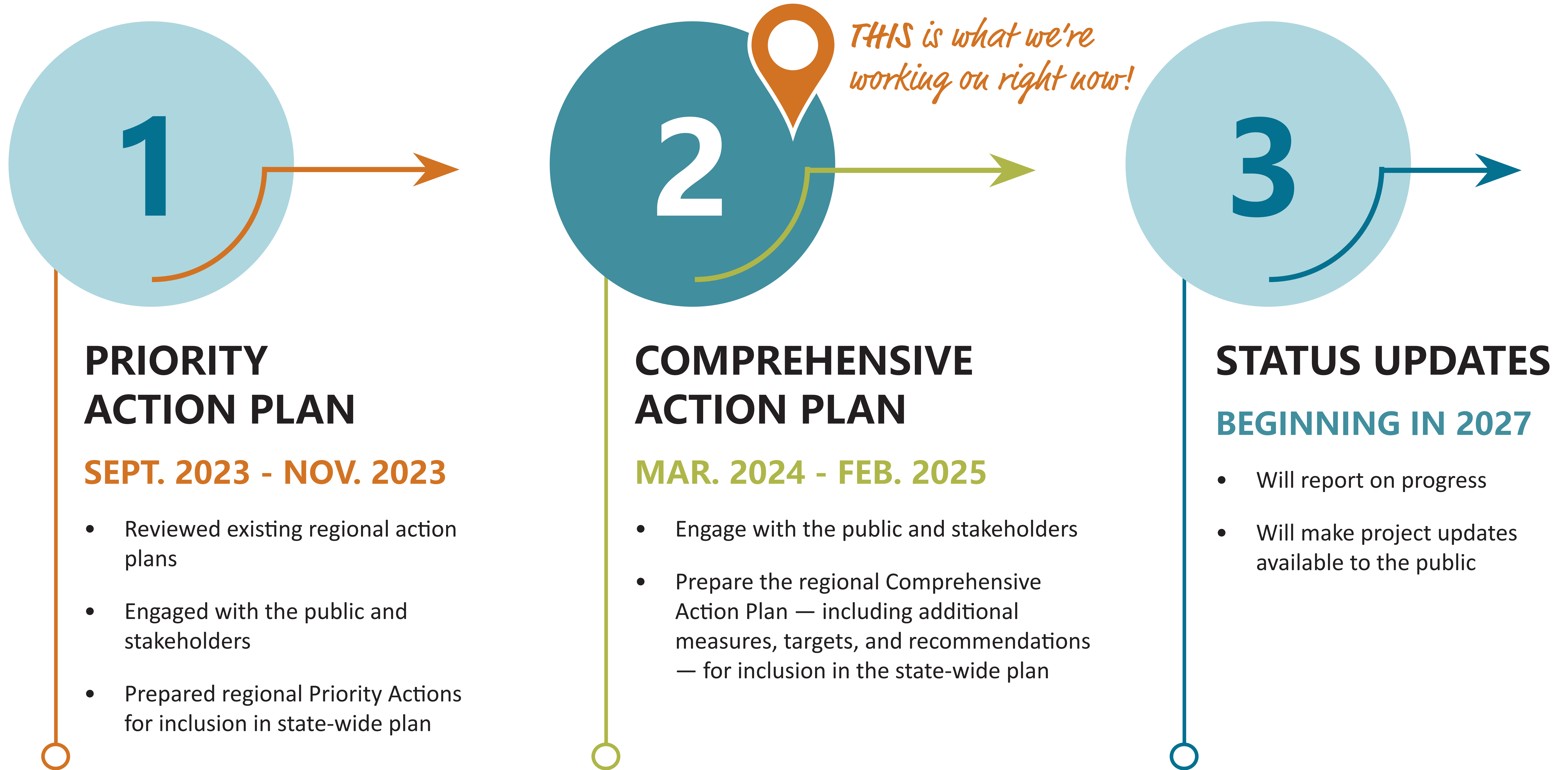


Northwest Arkansas Regional Planning Commission (NWARPC)

Regional Plan Phases



GOOD NEWS!

In addition to these ongoing Planning initiatives, Northwest Arkansas is receiving **\$36.25 MILLION** of the \$99,999,999 million Climate Pollution Reduction Grant (CPRG) Implementation Grant awarded by the Environmental Protection Agency (EPA) to the Arkansas Tri-Region Coalition. NWARPC coordinated with regional partners to identify and develop 18 “Green Network” projects across ten (10) cities, and two (2) regional-serving programs to protect and restore natural cores and corridors and increase access to connected active transportation networks. This is a **HUGE WIN** for resiliency and sustainability efforts throughout our region. **Let’s celebrate!**

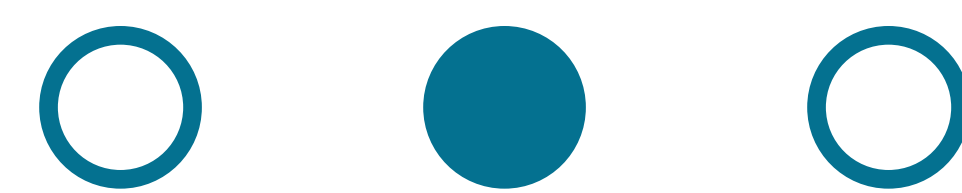
What is this all about?

The U.S. Environmental Protection Agency created the **Climate Pollution Reduction Grant (CPRG)** program.



Arkansas Department of Energy and Environment (ADEE) applied for a CPRG Planning Grant, and:

- The EPA awarded a \$3 million **PLANNING** grant to ADEE to create an Arkansas Energy and Environment Innovation Plan.
- With the Energy and Environment Innovation Plan in place, state and local governments are then eligible for CPRG Implementation Grants (*which is what our state and region won!*).



PURPOSE OF THE **PLANNING** GRANT

To ensure and plan for targeted investment in energy infrastructure and technologies that **reduce pollutants, create high-quality jobs, and spur economic growth** in our region and across the state

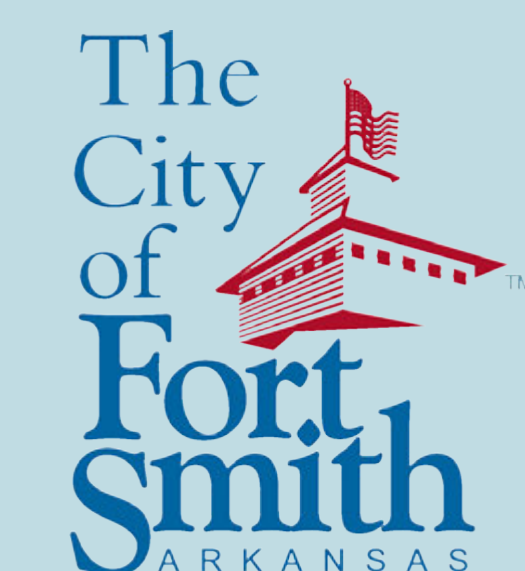
OUR ASK OF YOU

Take the survey so we can understand what kinds of **pollutant reduction projects, programs, or policies** should be prioritized in the state and region-specific comprehensive plans.

THIS is what we need your help with!

Then, the Northwest Arkansas Regional Planning Commission (NWARPC) was...

- Awarded funding to create a NWA regional plan to be included in state-wide plan (*see the next poster for NWARPC's regional planning process*)
- Planning Partners:





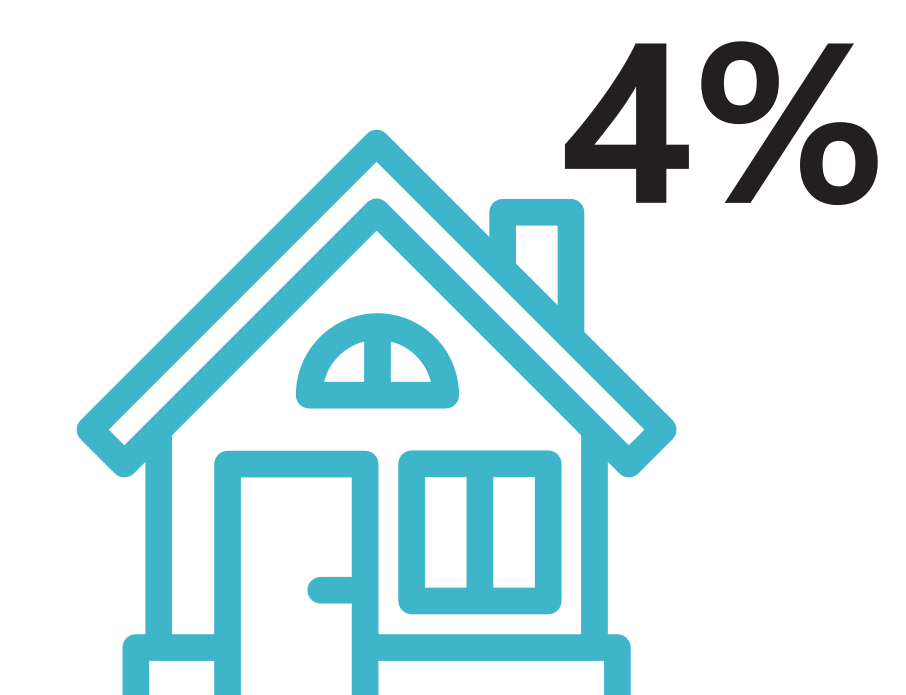
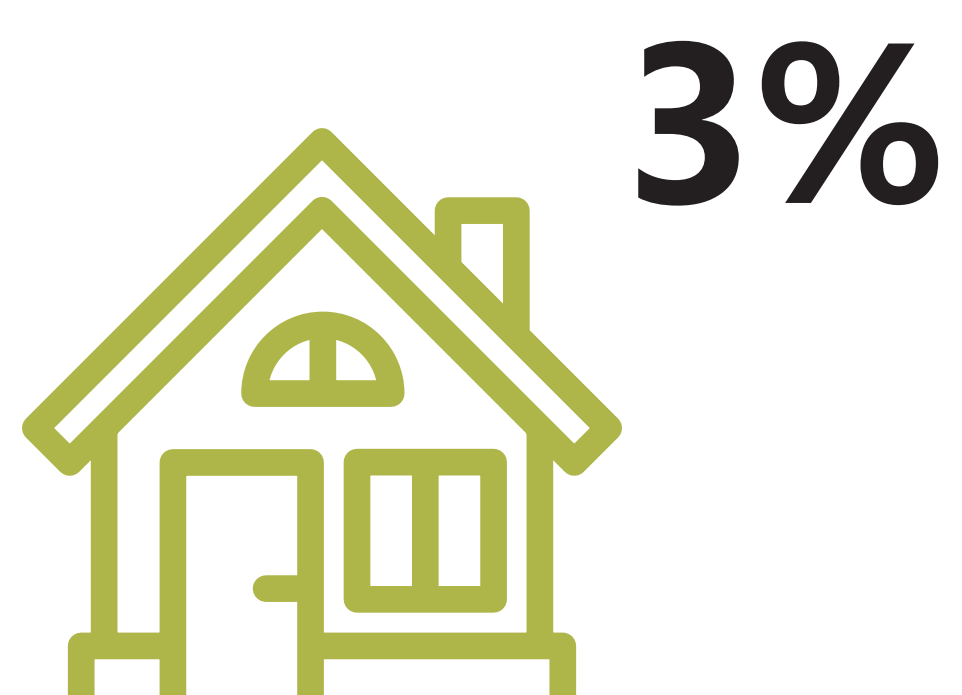
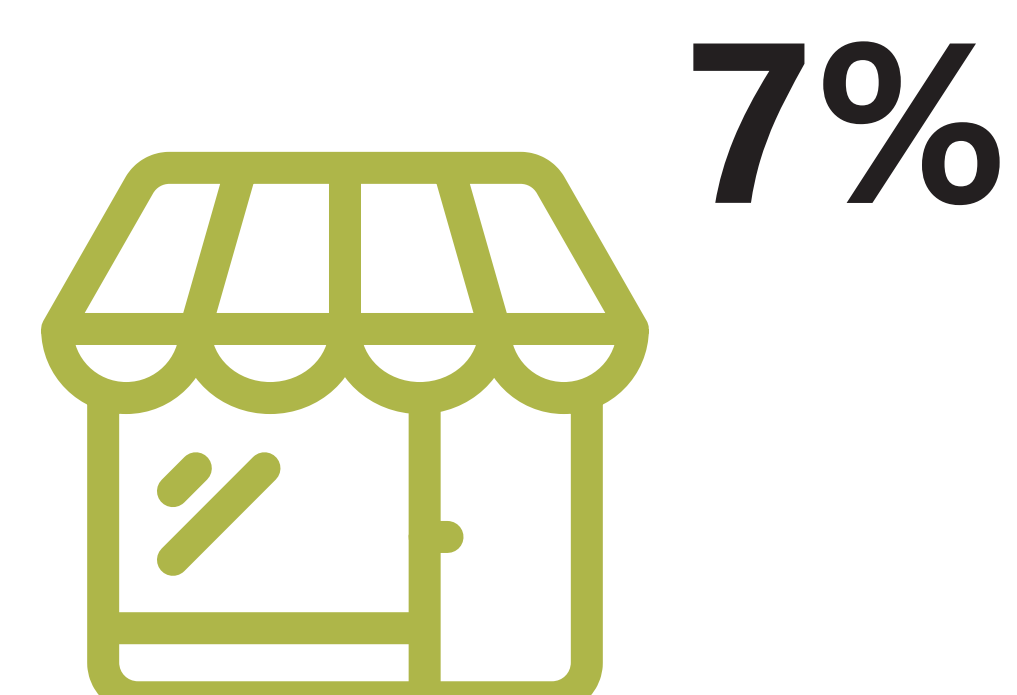
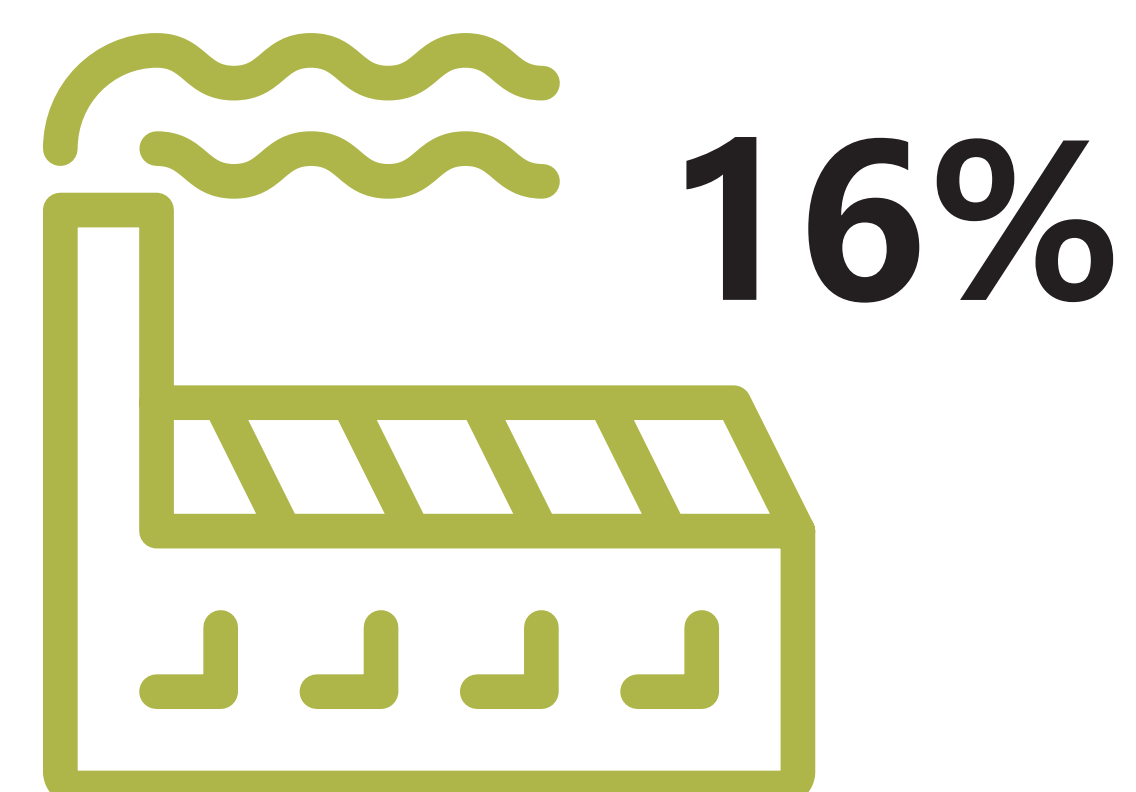
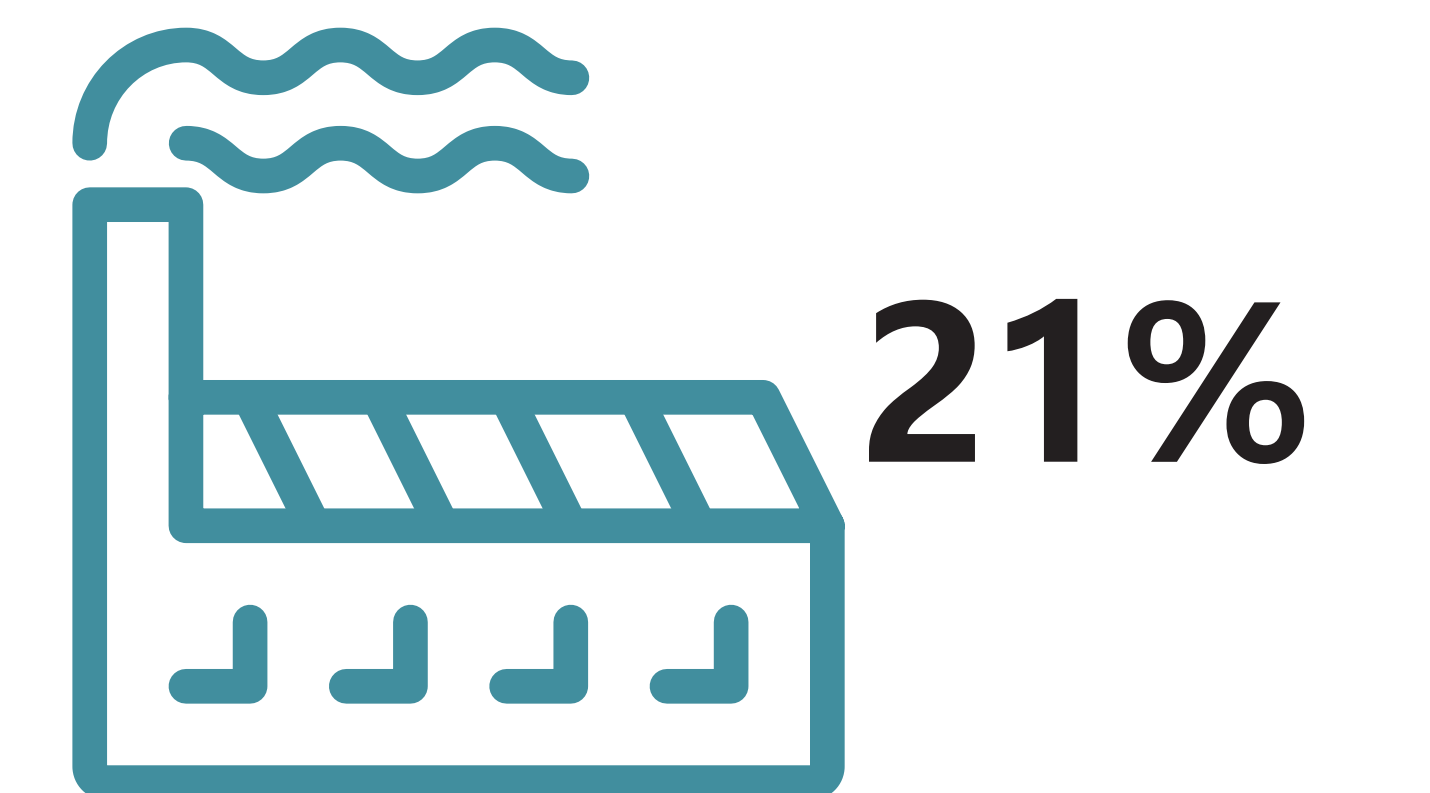
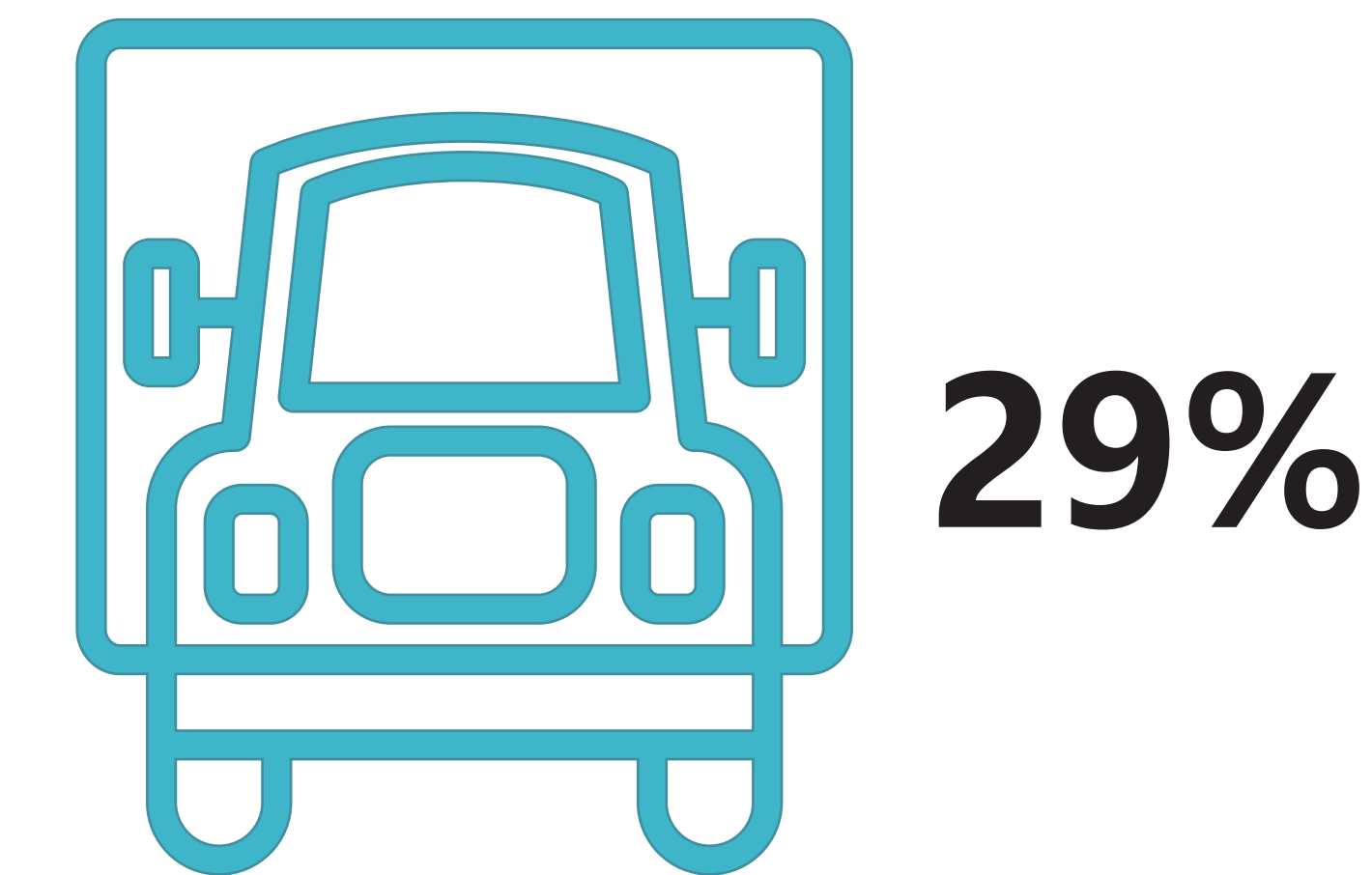
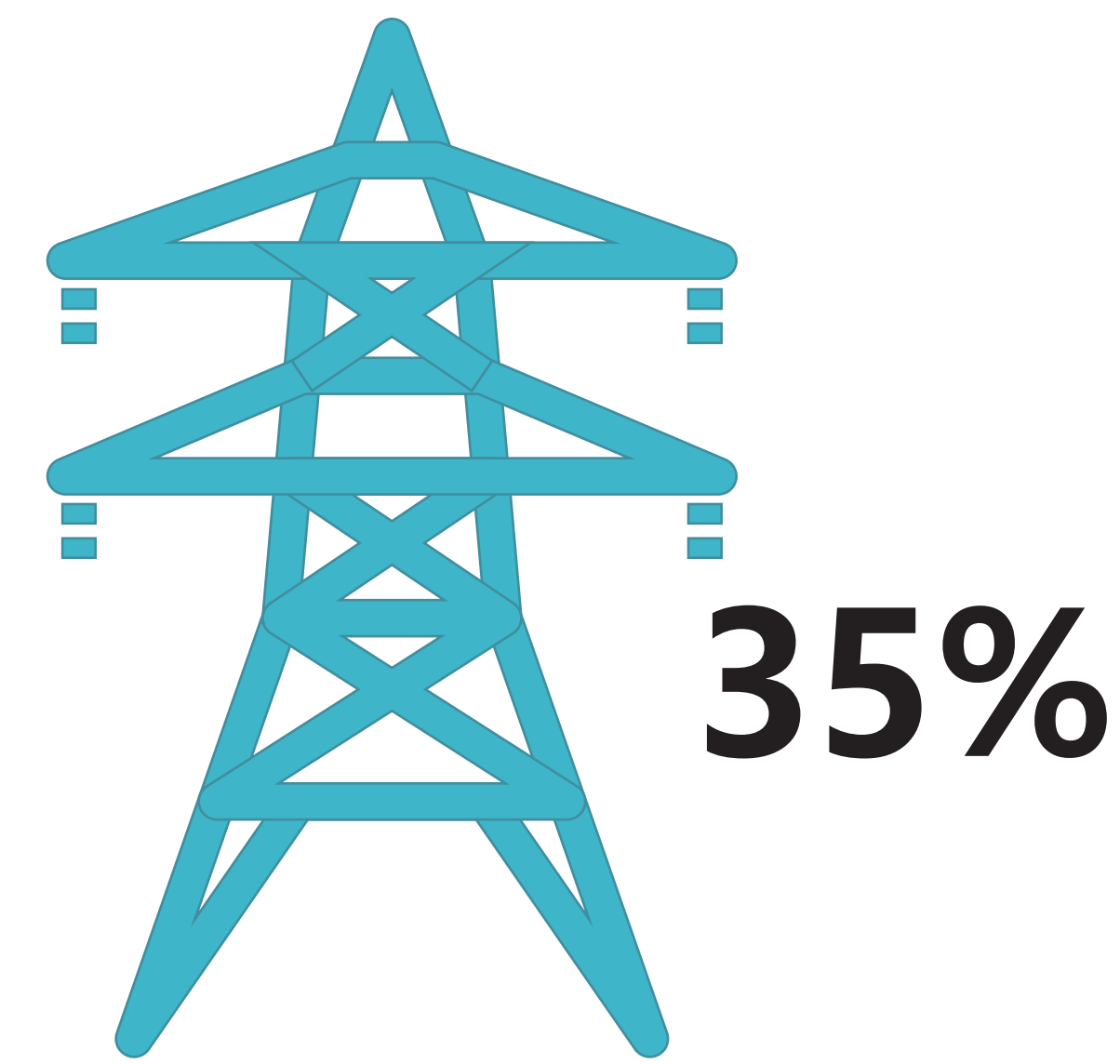
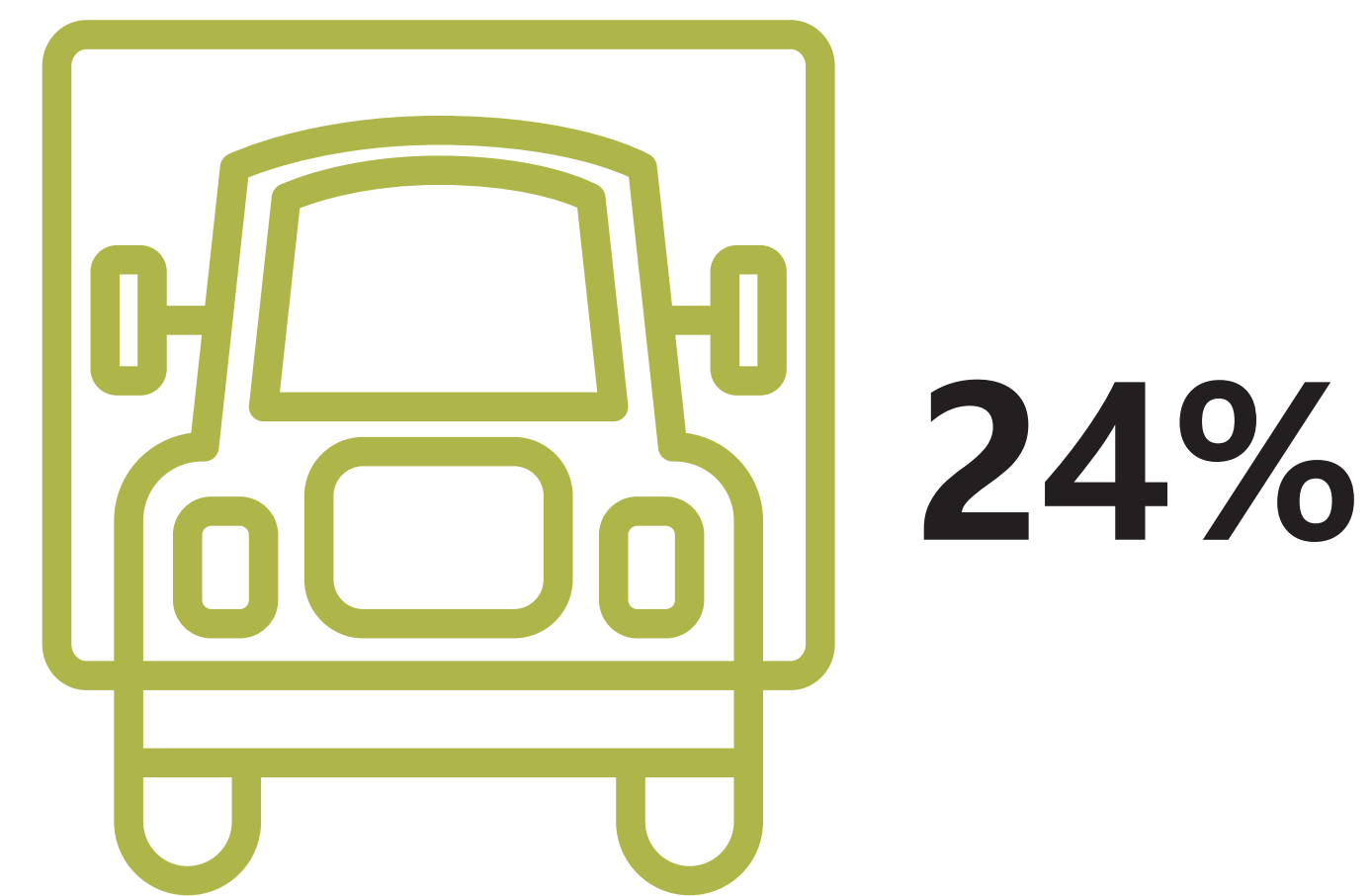
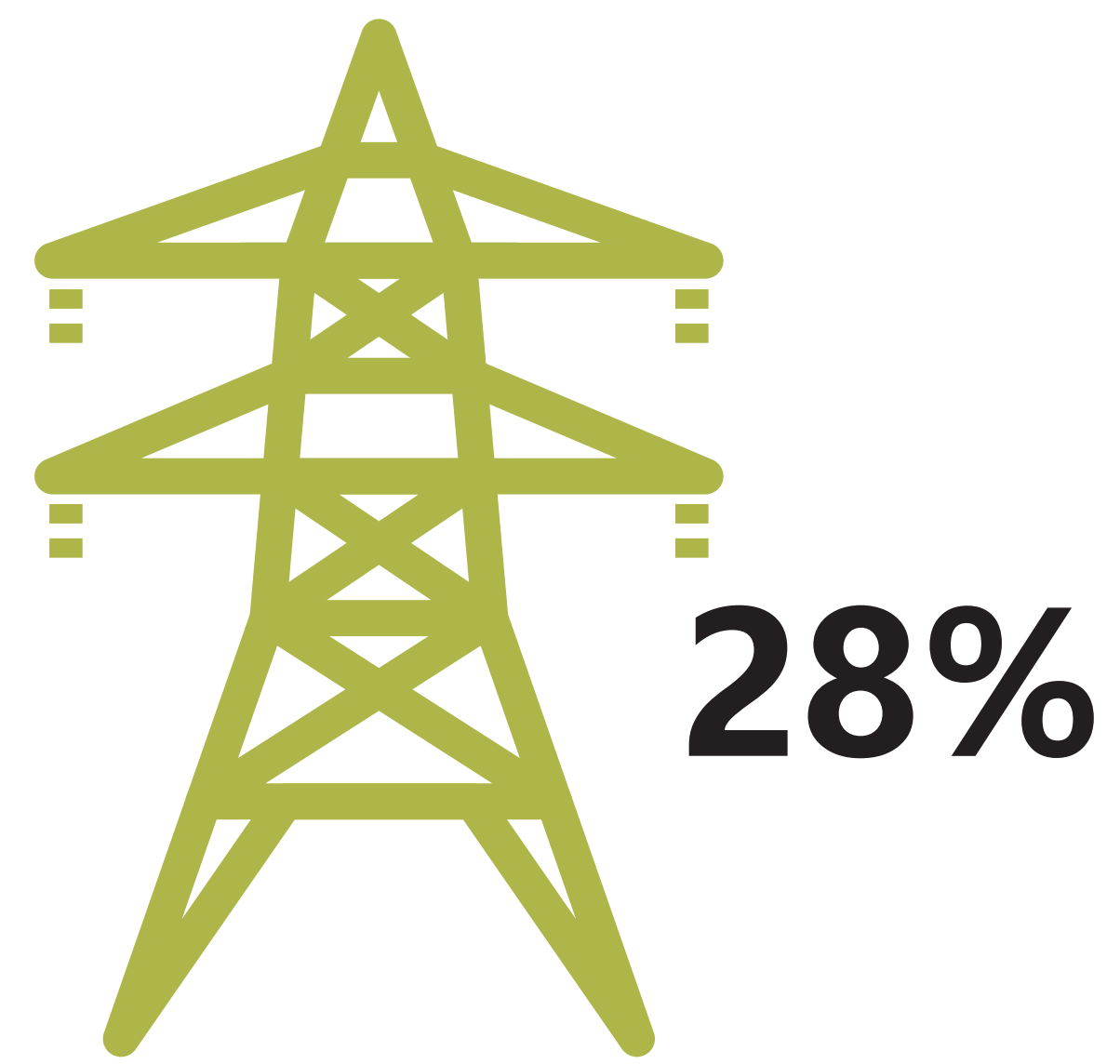
STATEWIDE GREENHOUSE GAS EMISSIONS

- The **power sector** is currently the largest contributor to greenhouse gas emissions in Arkansas.
- Carbon dioxide makes up 70% of Arkansas greenhouse gas emissions followed by methane (19%), nitrous oxides (10%), and fluorinated gases (3%).



NORTHWEST ARKANSAS GREENHOUSE GAS EMISSIONS

- The **power sector** is currently the largest contributor to greenhouse gas emissions in Northwest Arkansas.
- The agriculture sector emits approximately 2% of the total greenhouse gas emissions in Northwest Arkansas.



Arkansas Greenhouse Gas Emissions (CO₂e), 2020 obtained from U.S. EPA's Inventory of U.S. Greenhouse Gas Emissions and Sinks by State: 1990 - 2020

Approximated using State data and adjusted per agricultural percentage, based upon urban/rural area in NWA compared to State

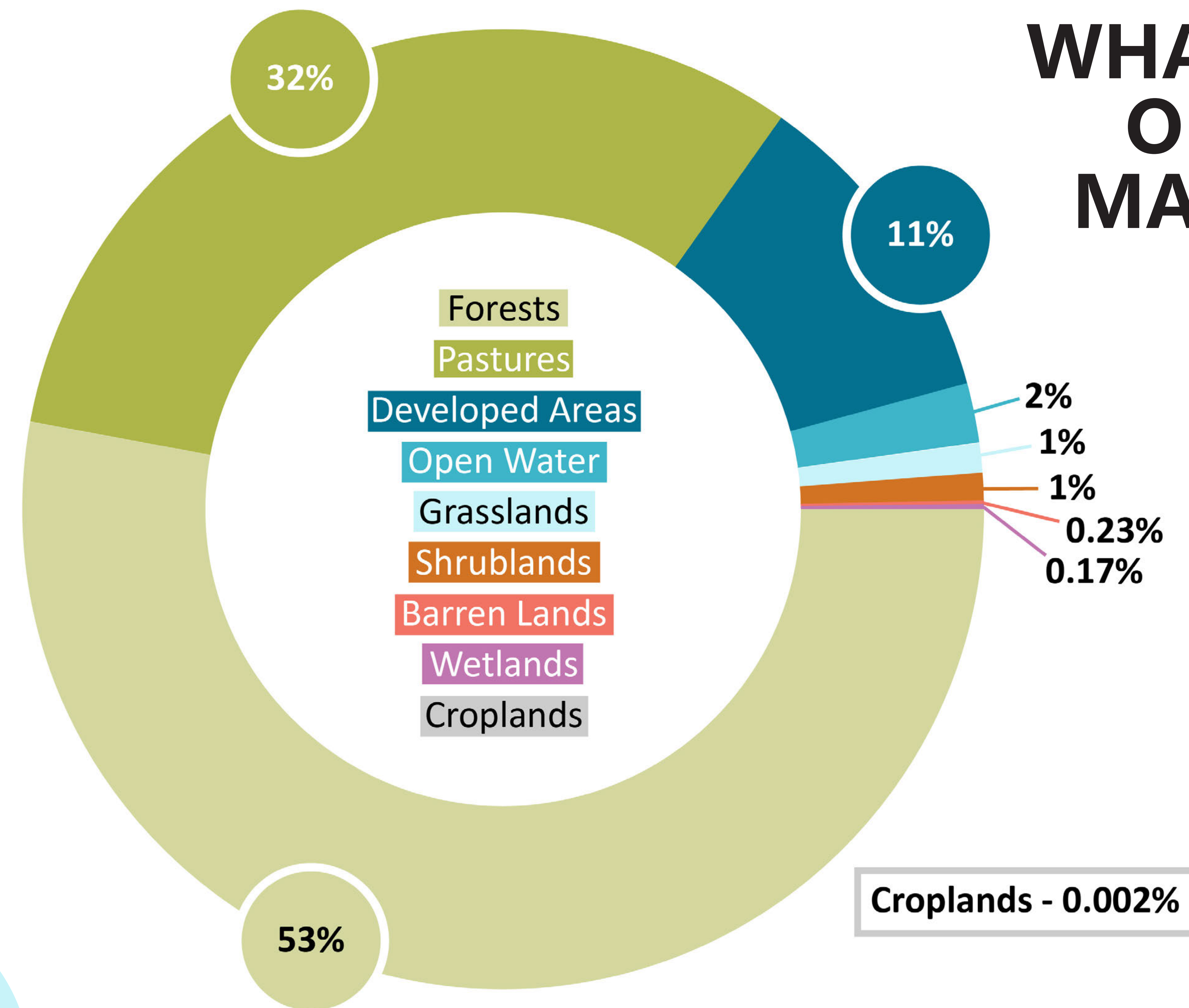
CARBON SINKS

- A “carbon sink” is any natural system that **absorbs and stores more carbon** from the atmosphere than it releases. This absorption and storage of carbon is called **carbon sequestration**.
- In Northwest Arkansas, **forests store 40% of the carbon** that is sequestered in the region.
- Forests cover approximately 53% of the land area in Northwest Arkansas.

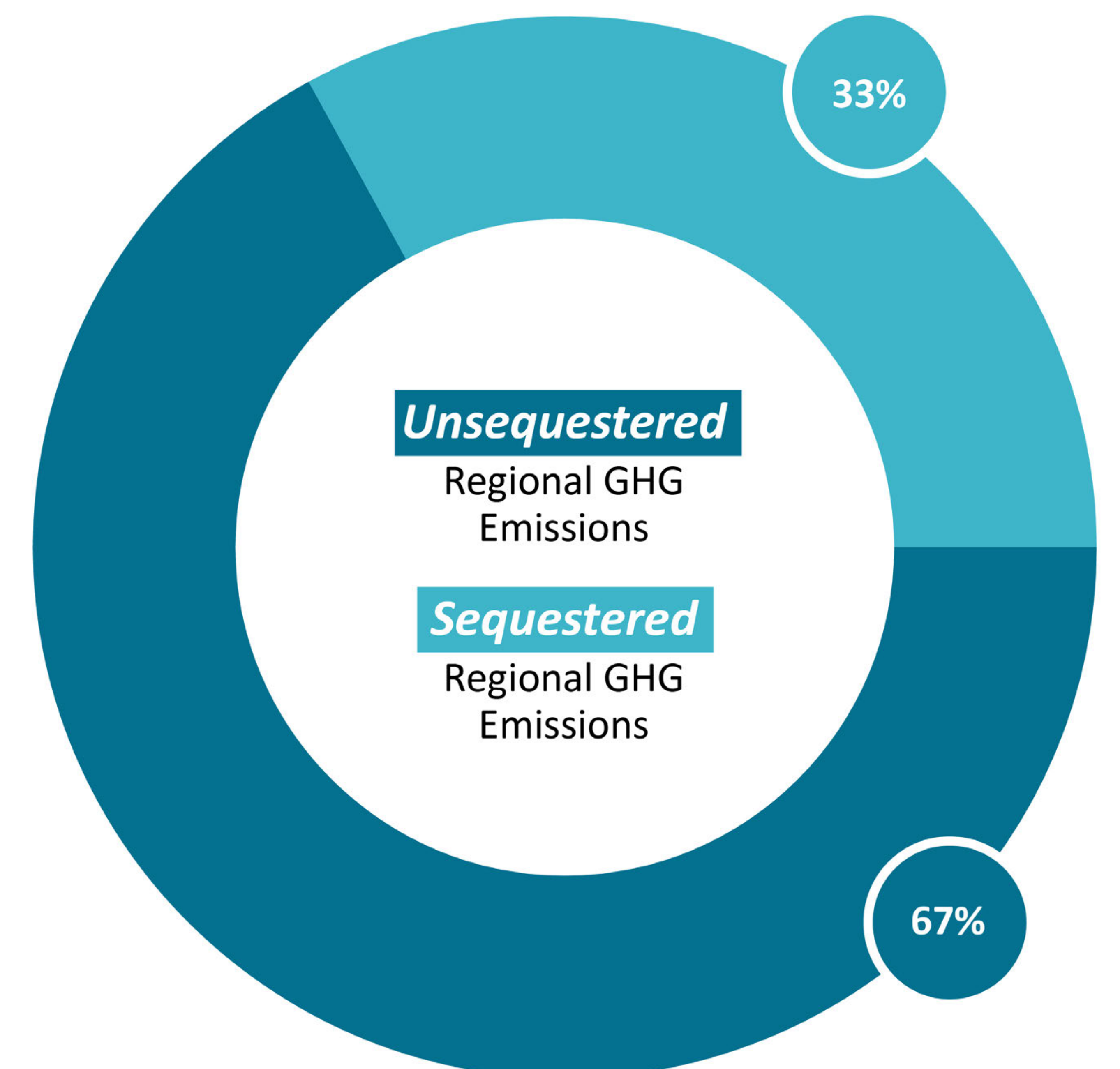
DID YOU KNOW?

Forests play an important role in NWA!

WHAT TYPE OF LAND MAKES UP NWA?



HOW MUCH CARBON IS SEQUESTERED BY THE LAND IN NWA?

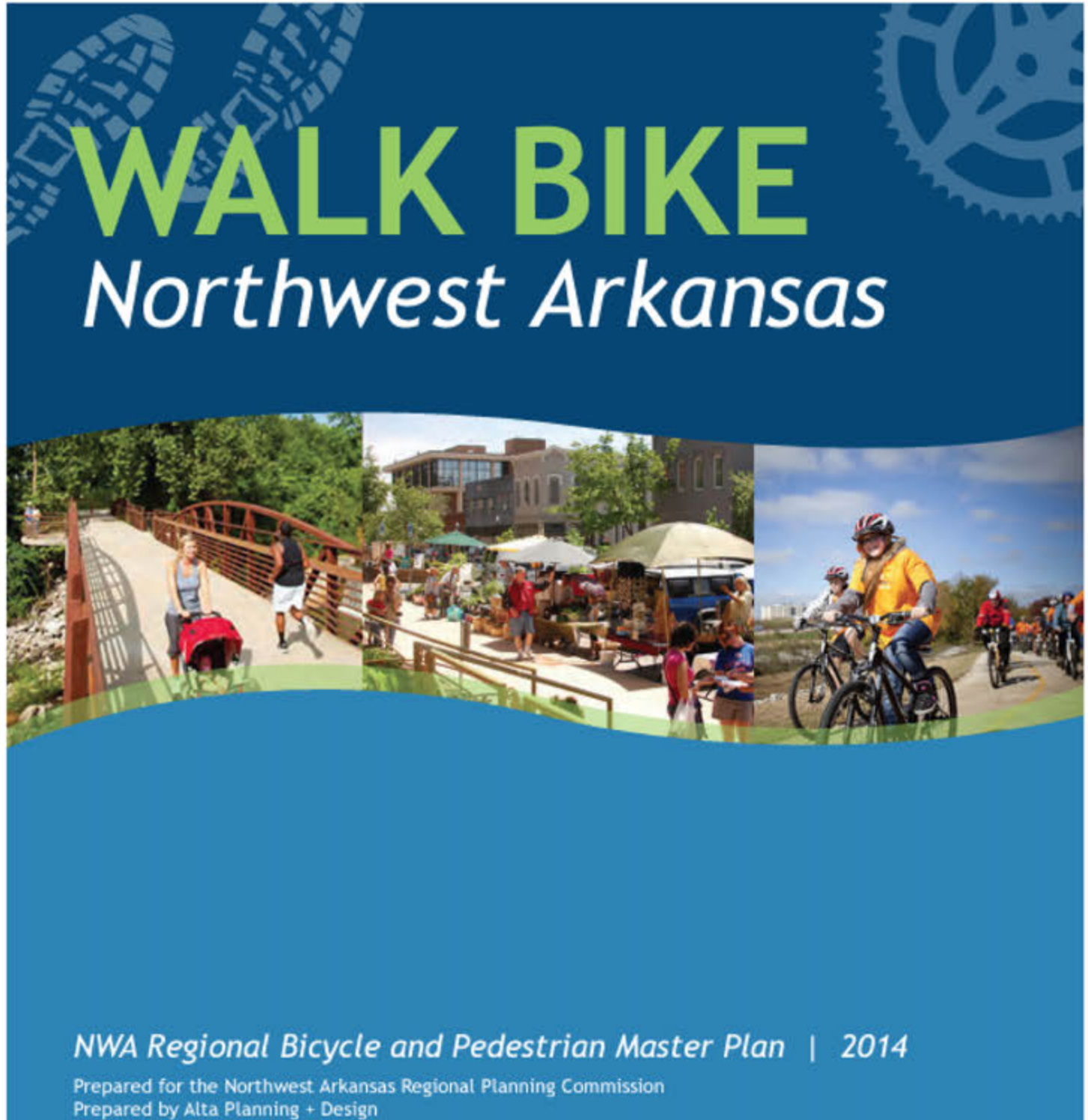


DID YOU KNOW?

The Northwest Arkansas Regional Planning Commission has been working on pollutant reduction efforts for a long time, including the plans shown below. As a major planning initiative, NWARPC is currently also working on the region's **2050 Metropolitan Transportation Plan**, which will be informed by all the plans below, including the **Northwest Arkansas Energy & Environment Innovation Plan**.



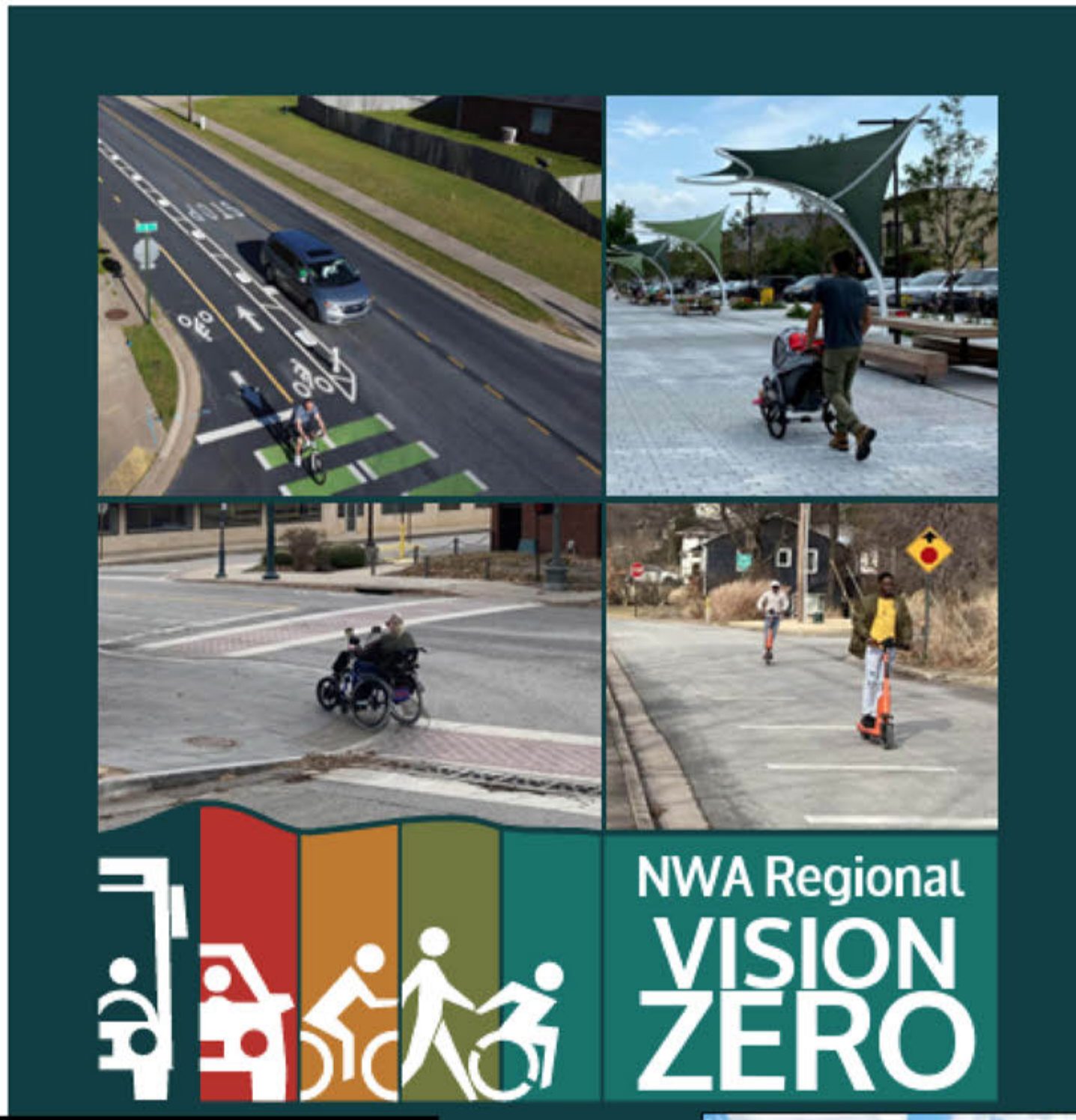
NWA BICYCLE AND PEDESTRIAN MASTER PLAN



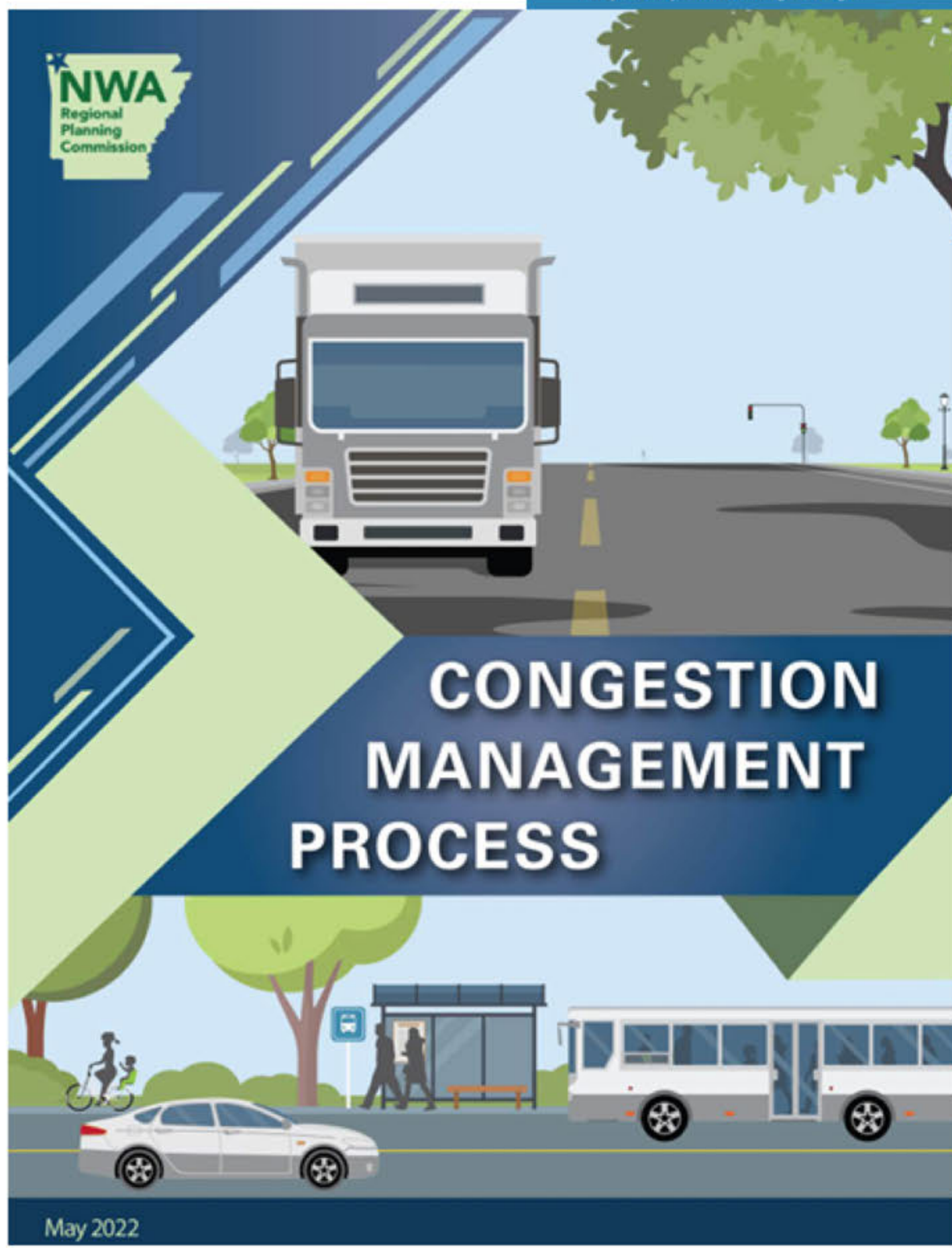
NWA OPEN SPACE PLAN



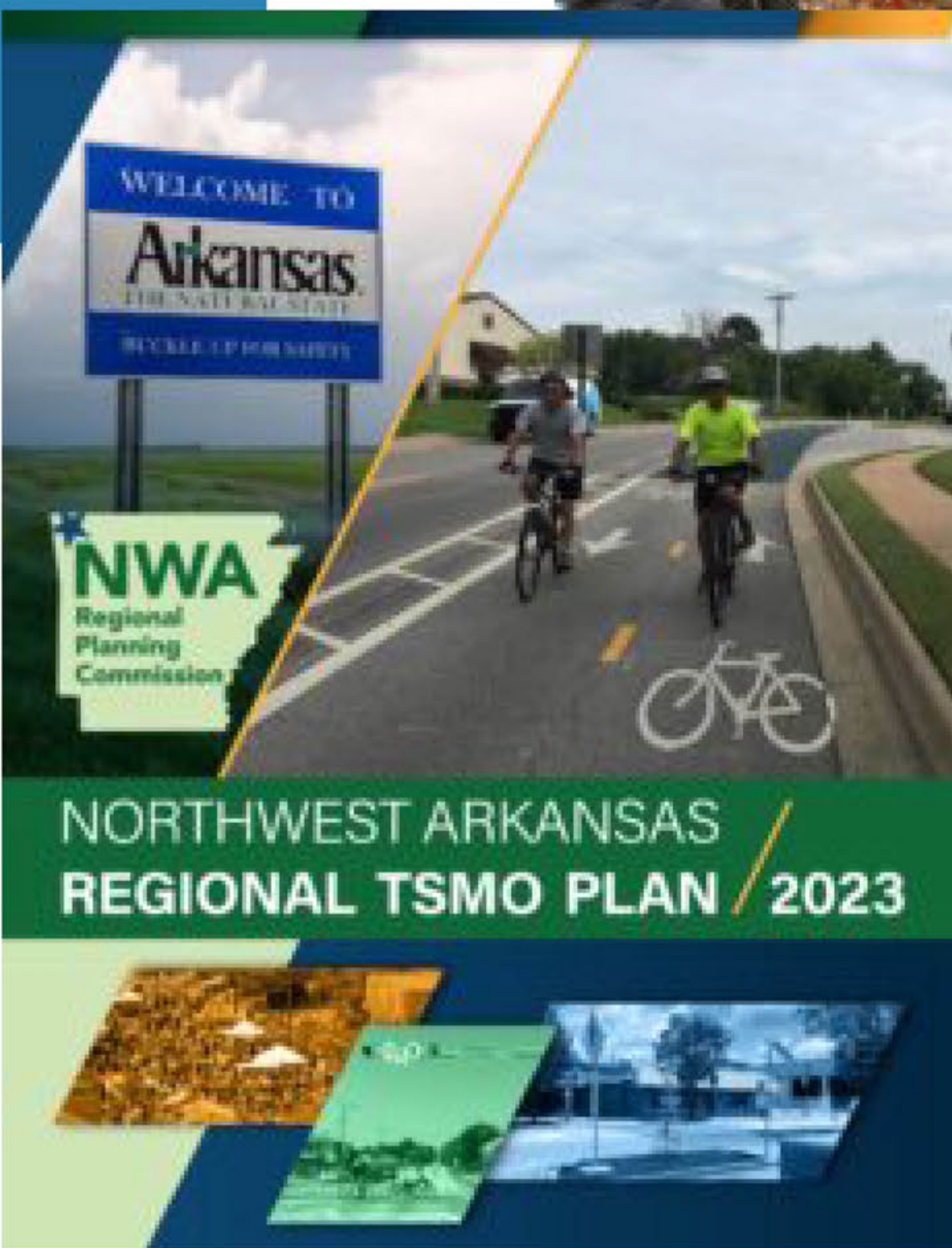
NWA VISION ZERO PLAN



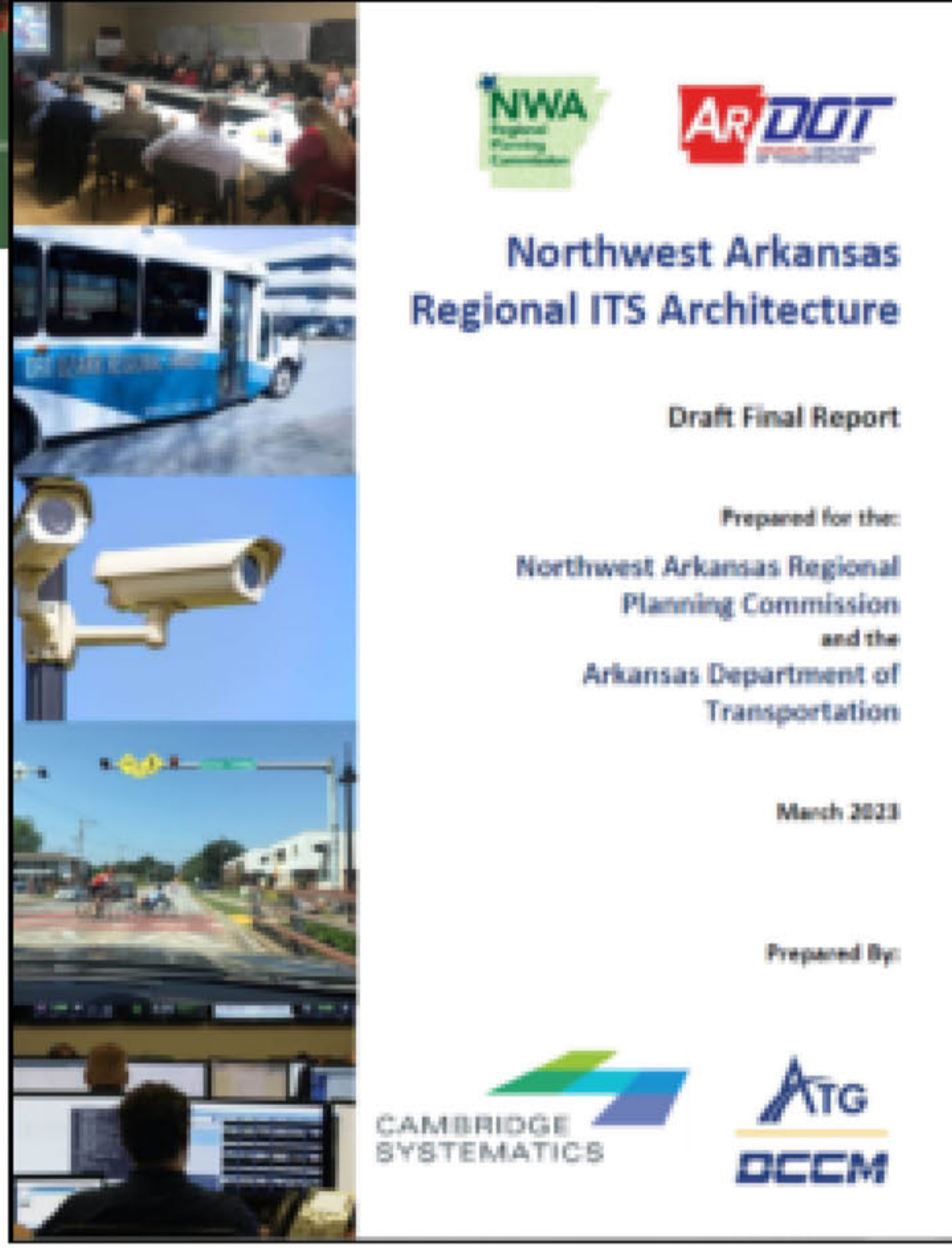
CONNECT NWA



CONGESTION MANAGEMENT PROCESS



NWA TRANSPORTATION SYSTEMS MANAGEMENT AND OPERATIONS



NWA INTELLIGENT TRANSPORTATION SYSTEM



NWA ENERGY & ENVIRONMENT PRIORITY ACTION PLAN

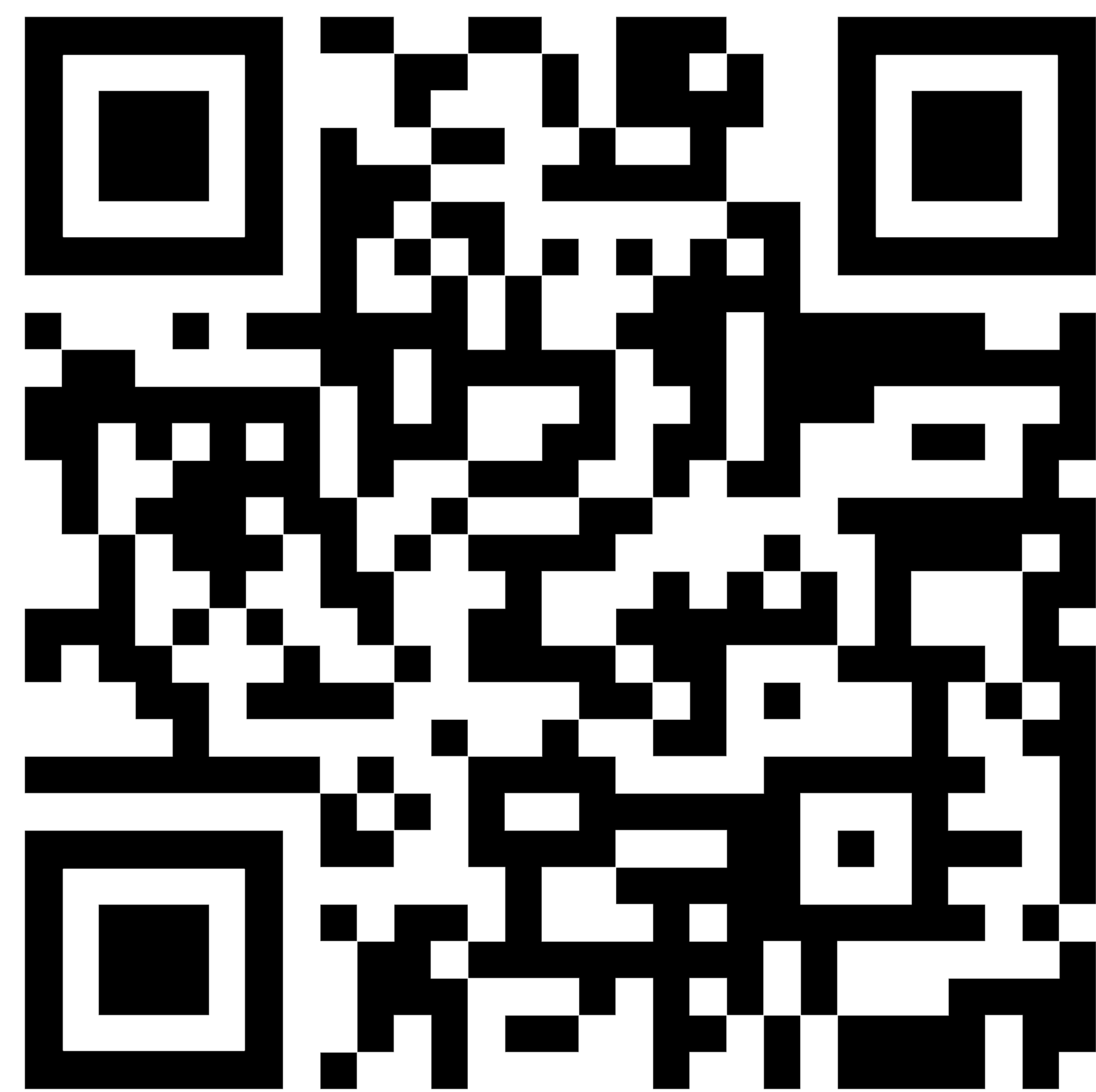


NWA ENERGY & ENVIRONMENT COMPREHENSIVE ACTION PLAN

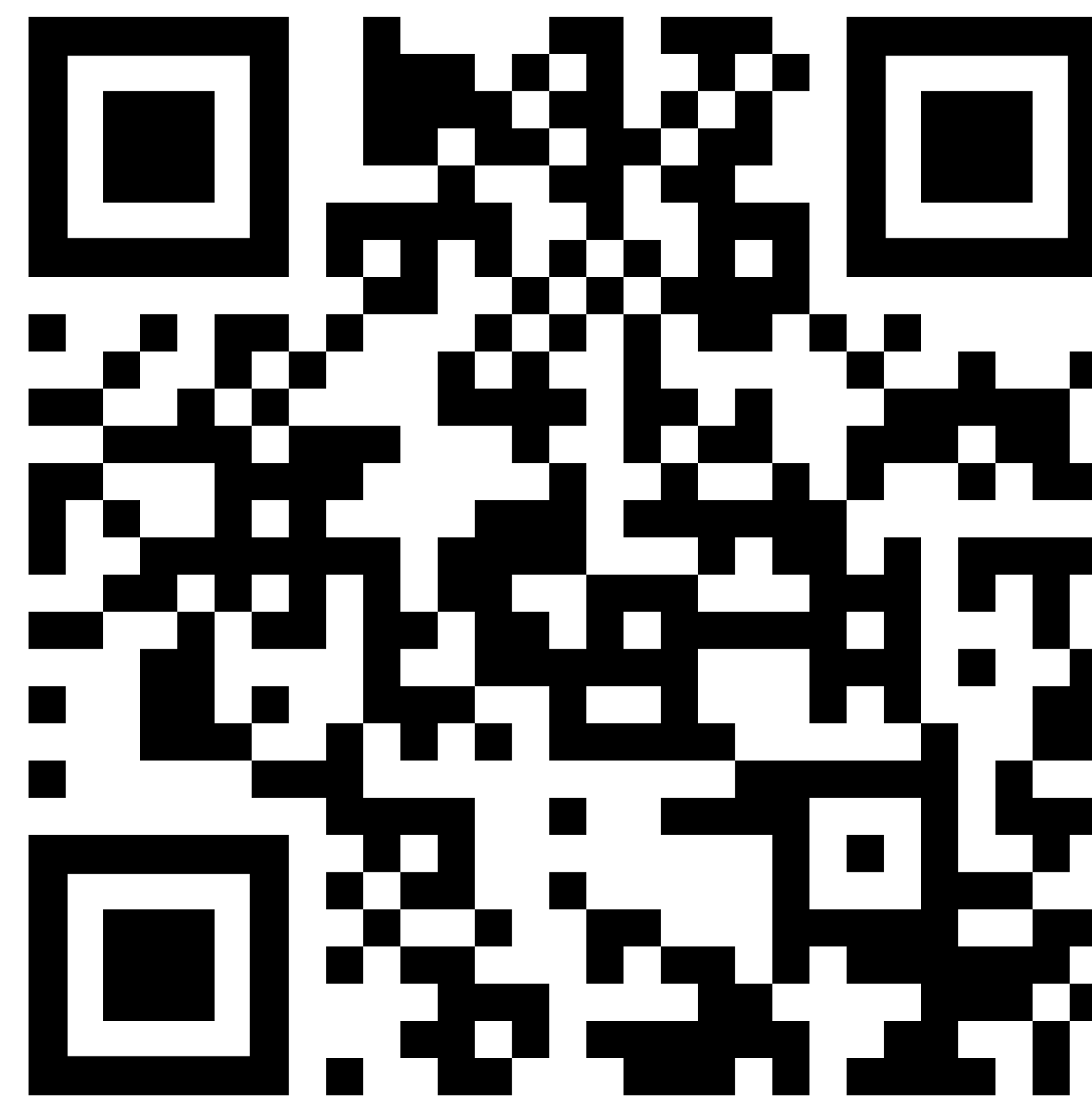
It's time to take the survey!

Take the survey by scanning the QR code below or pulling up the website listed below and pressing the "Take the Survey" button.

ENGLISH / SPANISH



MARSHALLESE



You can answer each question by following along with the upcoming poster.

nwarpc.org/energy-environment-innovation-plan

Survey Definitions

Learn more about some of the key terms used in the public survey. Ask the project team if you have any questions!



CARBON EMISSIONS

The release of carbon dioxide into the air, mostly from burning fossil fuels like coal and oil, contributing to global pollution and climate change



CLEAN ENERGY

Energy sources that produce little to no pollution or greenhouse gases, such as solar, wind, and hydroelectric power



BIOCHAR PYROLYSIS AND/OR GASIFICATION

Processes that heat organic material without oxygen to create “biochar” and gas that can be used for energy, to improve soil health like compost, and store carbon



ACTIVE TRANSPORTATION

Traveling by walking, cycling, or other self-propelled wheels, which promotes health and reduces the use of vehicles



GREENHOUSE GASES

Gases in the earth’s atmosphere, like carbon dioxide and methane, that trap heat and come from activities such as burning fossil fuels, deforestation, industrial processes, and agricultural practice



ANAEROBIC DIGESTER

A system that breaks down organic waste, such as food scraps or manure, without oxygen to produce biogas (mostly methane) and nutrient-rich compost, similar to pyrolysis and gasification



TRANSIT-ORIENTED DEVELOPMENT

A community planning strategy that creates walkable communities centered around public transportation to encourage the use of transit and reduce car dependence



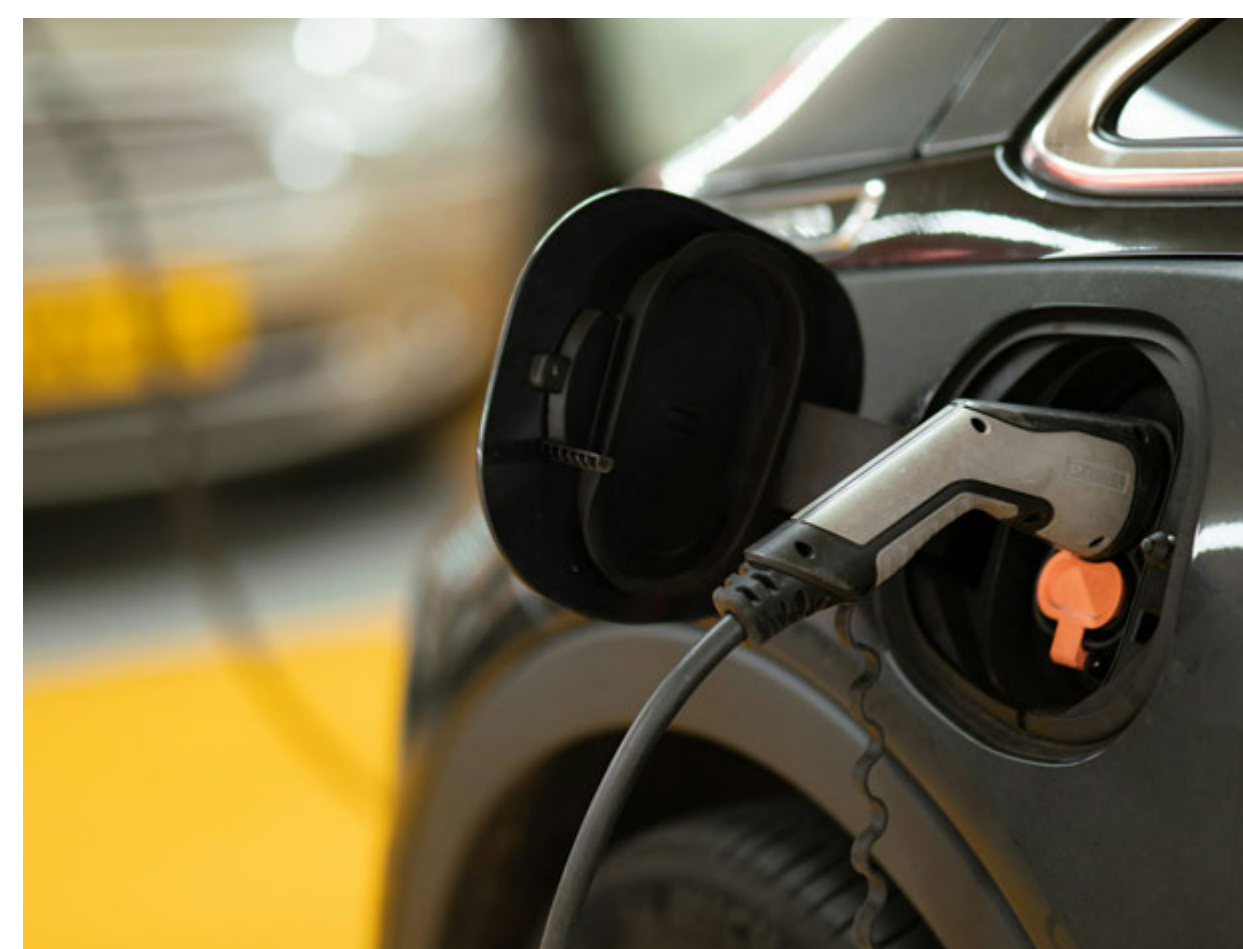
CARBON NEUTRAL

Balancing the amount of carbon dioxide emitted with an equivalent amount of carbon offset or removal, such as investing in reforestation projects that absorb an equivalent amount of carbon dioxide



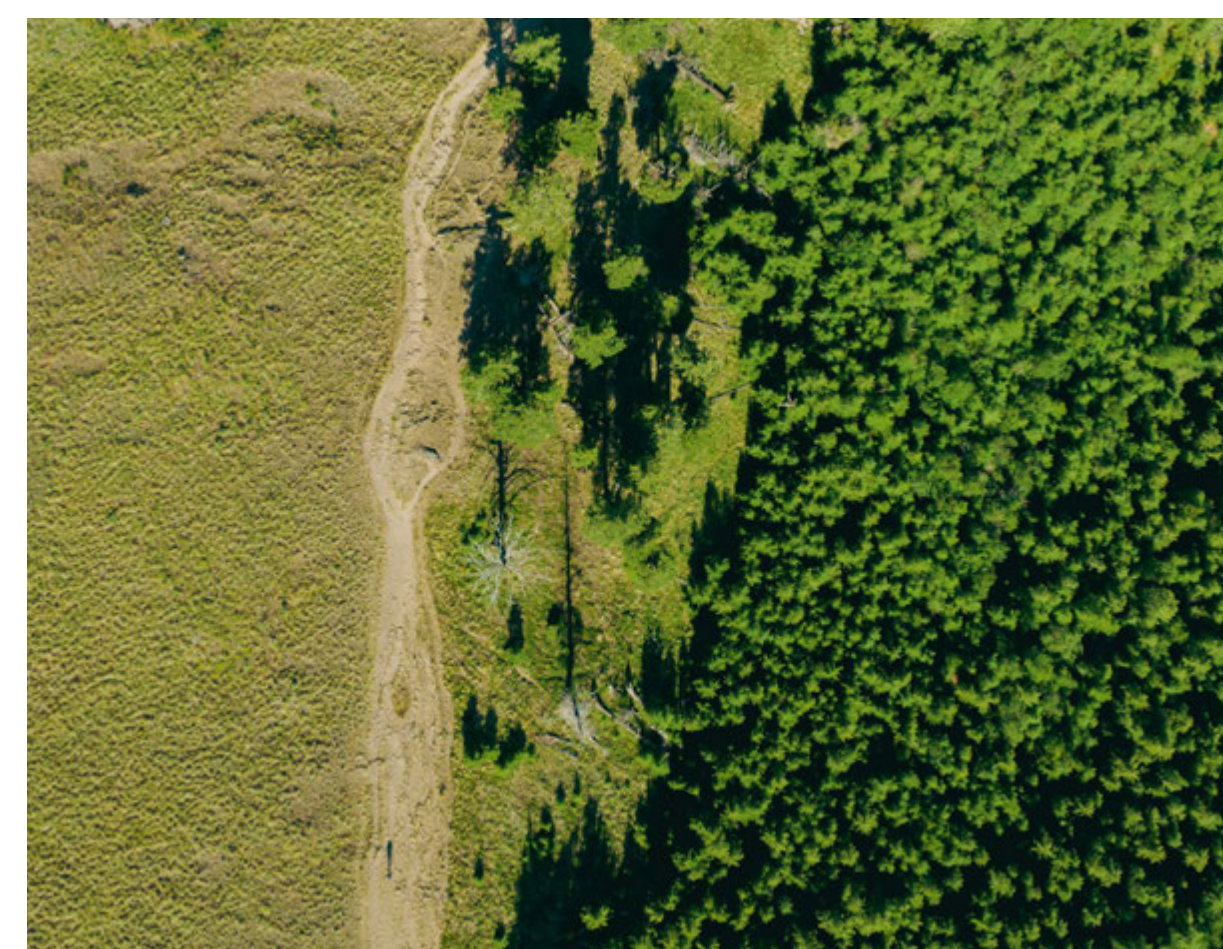
ECOSYSTEM SERVICES

Benefits that humans receive from natural environments, such as clean air and water, pollination of crops, natural disaster protection like flooding, and storing carbon



LOW/NO EMISSION VEHICLES

Vehicles or transportation options that produce little to no carbon emissions, generally electric and hybrid cars, that reduce environmental impact



CARBON FOOTPRINT

The total amount of carbon dioxide and other greenhouse gases produced by an individual, organization, or activity, typically measured in terms of equivalent tons of carbon dioxide



CARBON SEQUESTRATION

Process of capturing and storing carbon dioxide from the atmosphere to reduce its impact on the environment and climate change



BUILDING AND ZONING CODES

Regulations that set standards for the construction, design, and use of buildings and land to ensure safety and functionality, sometimes guided by a community vision or “master plan.”



COMPOSTING

The process of breaking down organic waste, like food scraps and yard trimmings, into nutrient-rich soil through natural decomposition



LOW-INCOME AND DISADVANTAGED COMMUNITIES

Urban, rural, or suburban areas defined by factors such as lower income levels, limited access to resources and services, higher rates of poverty, and increased exposure to environmental and social challenges

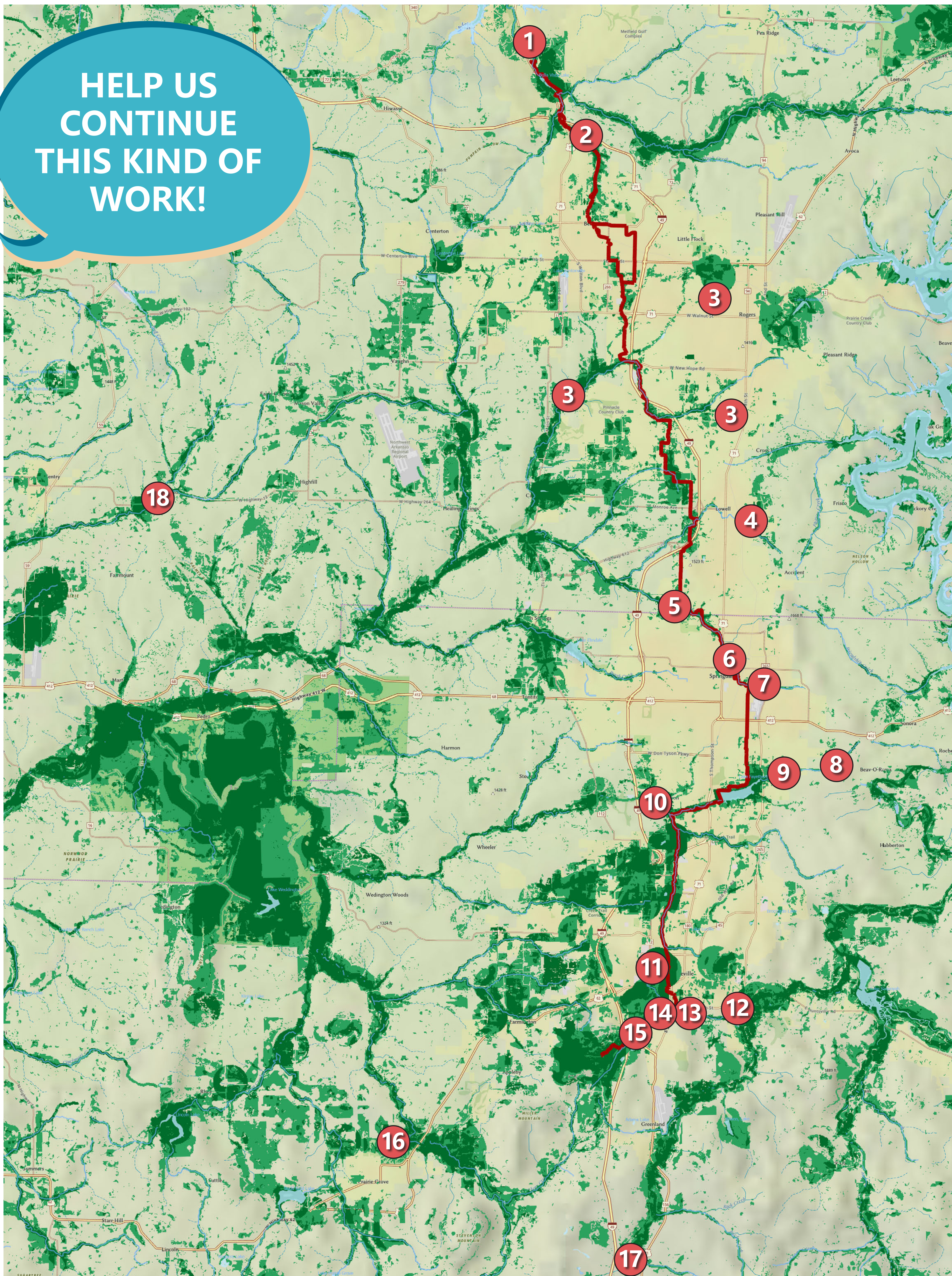
DID YOU KNOW?

NWARPC coordinated with regional partners to identify and develop 18 “Green Network” projects across ten (10) cities, and two (2) supporting, regional-serving programs (workforce training program and e-bike incentive program) to protect and restore natural cores and corridors and increase access to connected active transportation networks. These 18 projects, shown on the map below, are being **funded by the CPRG Implementation Grant awarded by the EPA to the Arkansas Tri-Region Coalition**. Visit our website to learn more: nwarpc.org/energy-environment-innovation-plan.



NWA GREEN NETWORK CPRG IMPLEMENTATION GRANT PROJECTS

HELP US CONTINUE THIS KIND OF WORK!



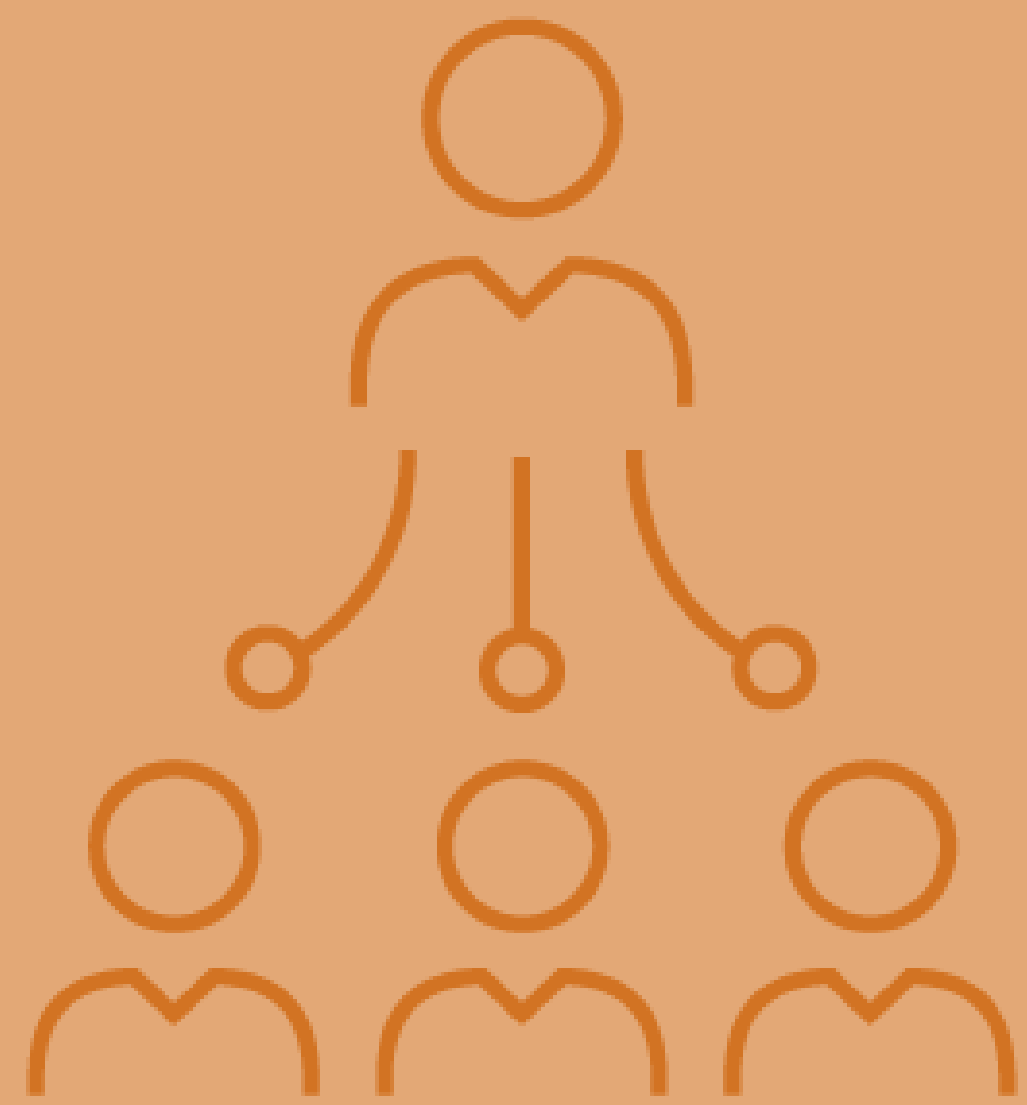
NWA Green Network Projects Legend

- 1 Razorback Greenway Corridor Stream and Riparian Restoration
- 2 Razorback Greenway and Town Branch Corridor Forest and Riparian Restoration
- 3 Osage/Blossom Way Creeks Stream and Wetland Restoration, Preservation, and Trail Construction
- 4 Puppy Creek Stream and Wetland Restoration and Preservation
- 5 Spring Creek at Thunder Chicken Wetland, Stream, and Riparian Restoration and Preservation
- 6 Spring Creek at The Greenway Forest Stream and Riparian Restoration and Preservation
- 7 Spring Creek at Downtown Preservation
- 8 Willie George Park Wetland Restoration and Trail Construction
- 9 Lower Clear Creek Stream Restoration and Preservation
- 10 Johnson Park Riparian, Prairie, and Forest Restoration
- 11 University of Arkansas Oak Ridge Hillside Prairie and Forest Restoration and Trail Construction
- 12 River Commons Floodplain, Prairie, and Riparian Restoration, Preservation, and Trail Construction
- 13 Town Branch Corridor Stream and Riparian Restoration and Preservation
- 14 University of Arkansas Research and Tech Park Floodplain, Prairie, and Forest Restoration
- 15 University of Arkansas Oak Knoll Wetland, Prairie, Forest, Stream, and Riparian Restoration
- 16 Prairie Grove Battlefield State Park Wetland, Prairie, and Riparian Restoration
- 17 West Fork White River Wetland, Prairie, Stream, and Riparian Restoration and Preservation
- 18 Springtown Reforestation Projects

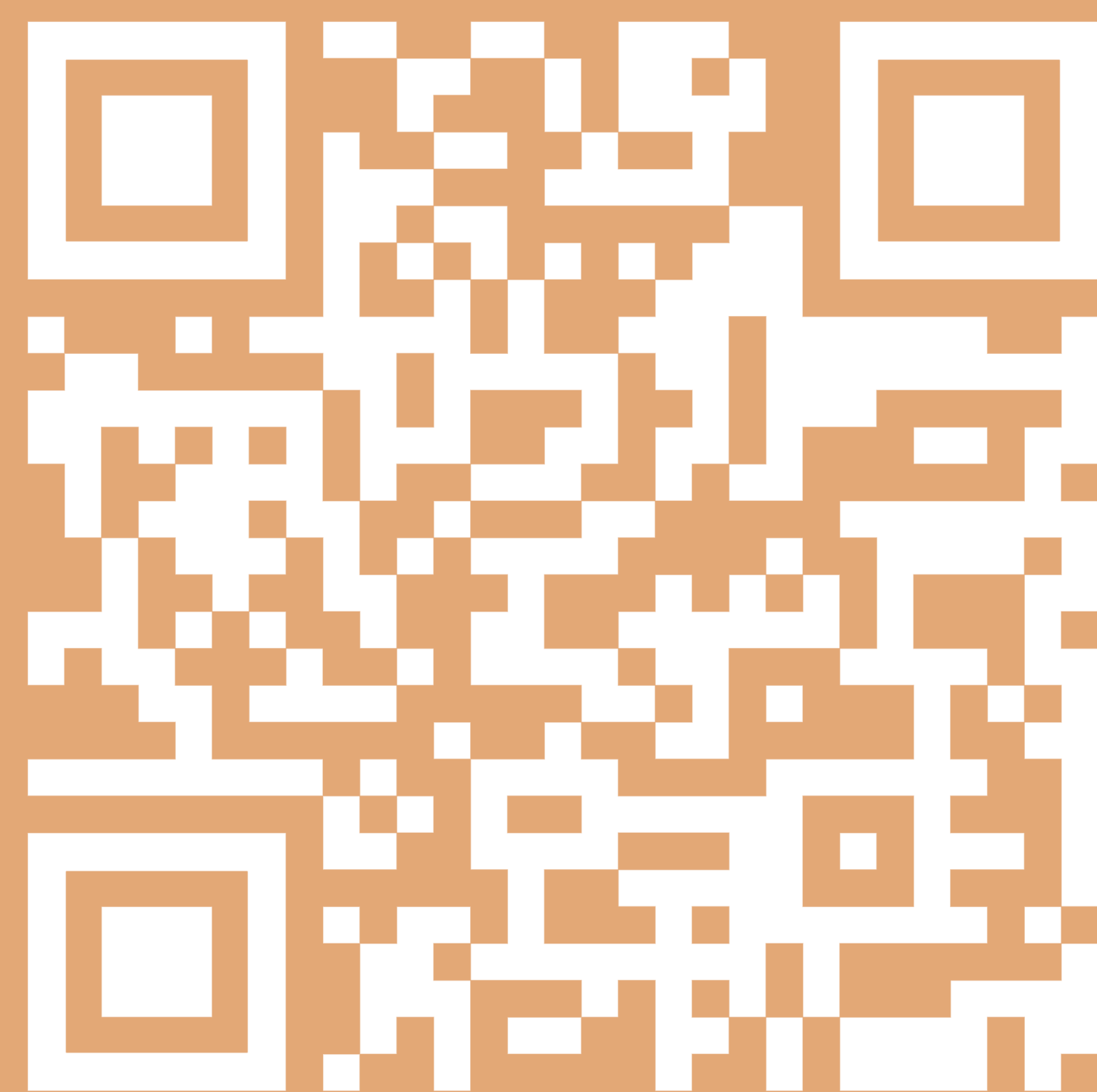


THANK YOU!

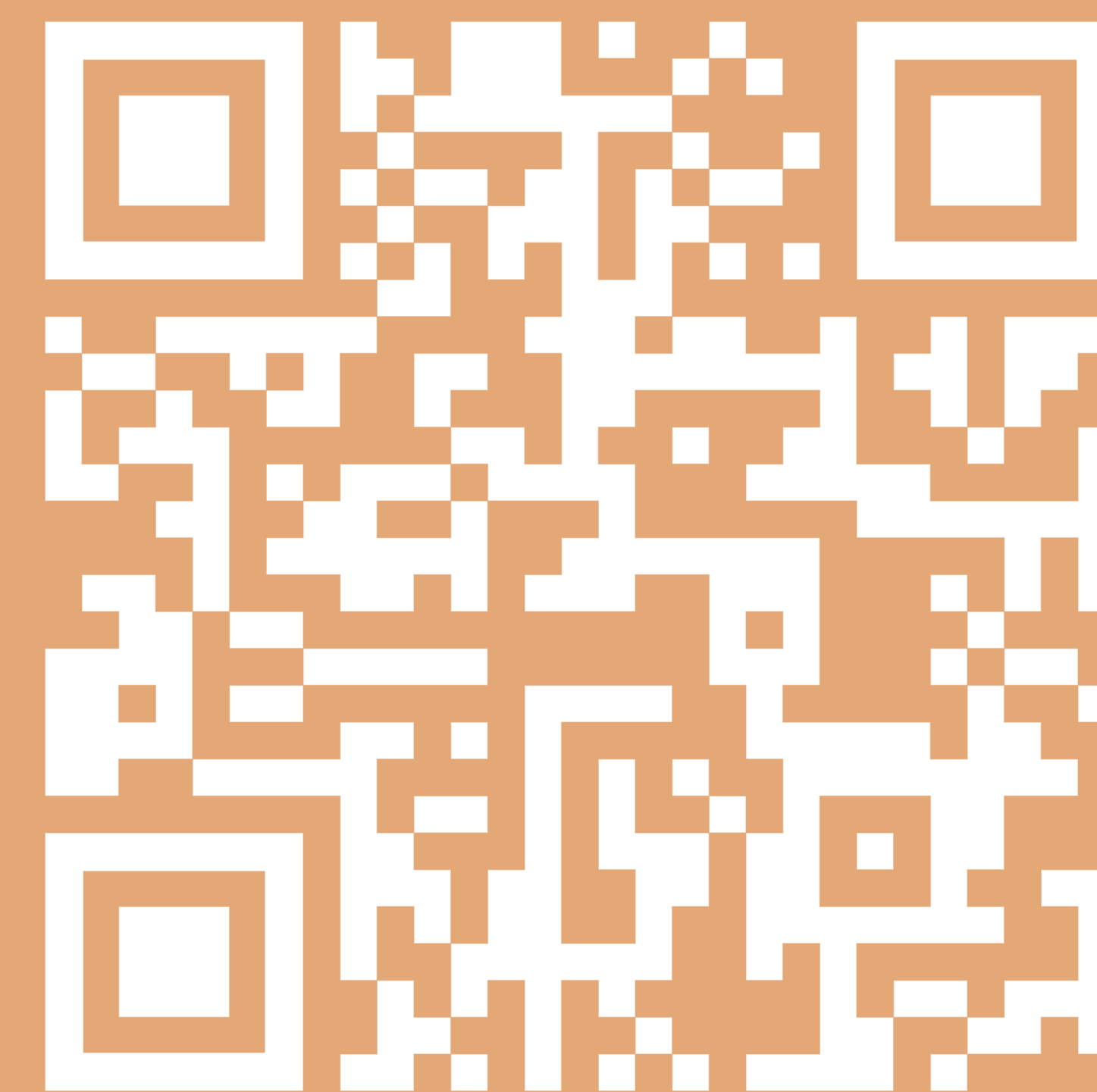
Share our
Facebook
and LinkedIn
posts!



Take the
survey!



Have an idea?
Fill out the
idea box!



Watch your
email for
project
updates!

