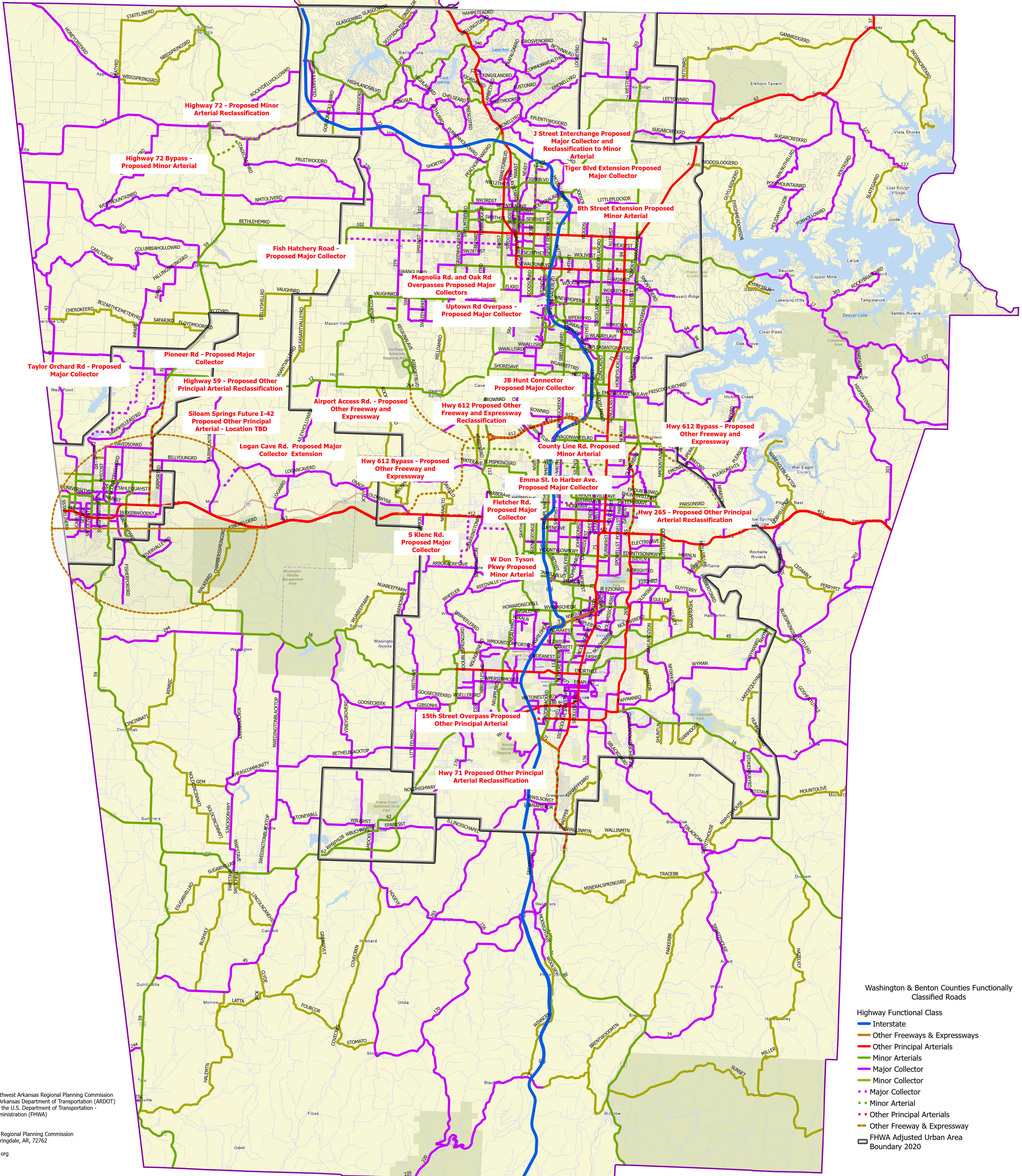


Functional Classification System—Reviewed and accepted by:  
 NWARPC Policy Committee Chair: \_\_\_\_\_  
 Washington County Judge: \_\_\_\_\_  
 Benton County Judge: \_\_\_\_\_  
 City of Siloam Springs: \_\_\_\_\_  
 ARDOT \_\_\_\_\_  
 FHWA \_\_\_\_\_

Date: \_\_\_\_\_  
 Date: \_\_\_\_\_  
 Date: \_\_\_\_\_  
 Date: \_\_\_\_\_  
 Date: \_\_\_\_\_  
 Date: \_\_\_\_\_



Prepared by the Northwest Arkansas Regional Planning Commission (NWARPC) and the Arkansas Department of Transportation (ARDOT) in collaboration with the U.S. Department of Transportation - Federal Highway Administration (FHWA)

Northwest Arkansas Regional Planning Commission  
 1311 Clayton St., Springdale, AR, 72762  
 Ph: (479) 751-7125  
 http://www.nwarpc.org  
 November 26, 2024

Washington & Benton Counties Functionally Classified Roads

Highway Functional Class

- Interstate
- Other Freeways & Expressways
- Other Principal Arterials
- Minor Arterials
- Major Collector
- Minor Collector
- Major Collector
- Minor Arterial
- Other Principal Arterials
- Other Freeway & Expressway
- FHWA Adjusted Urban Area Boundary 2020

# Washington & Benton Counties Functionally Classified Roads

City of Springdale, AR, Arkansas GIS Office, Missouri Dept. of Conservation, Missouri DNR, Texas Parks & Wildlife, Esri, TomTom, Garmin, SafeGraph, GeoTechnologies, Inc, METI/NASA, USGS, EPA, NPS, USDA, USFWS