

RESOLUTION #2023-24

**A RESOLUTION APPROVING THE METROPOLITAN PLANNING AREA FOR
THE FAYETTEVILLE-SPRINGDALE-ROGERS, AR-MO URBANIZED AREA
FOR MPO TRANSPORTATION PLANNING PURPOSES**

WHEREAS, U.S. Department of Transportation regulations require an areawide, multi-modal transportation plan and a continuing planning process for urbanized areas, and for the area projected to become urban within 20-25 years henceforth; and

WHEREAS, such planning must be carried out by a designated Metropolitan Planning Organization (MPO), which for the urbanized area has been the Northwest Arkansas Regional Planning Commission; and

WHEREAS, Decennial Census data has resulted in the expansion of the Fayetteville-Springdale-Rogers Urban Area within Missouri, thus necessitating a redefined Metropolitan Planning Area (MPA) for transportation planning purposes; and

WHEREAS, consultations with affected parties in Missouri have resulted in a new recommended MPA boundary and planning participation by appropriate authorities.

NOW THEREFORE, BE IT RESOLVED BY THE BOARD OF DIRECTORS OF THE NORTHWEST ARKANSAS REGIONAL PLANNING COMMISSION:

SECTION 1. That the Metropolitan Planning Area (MPA) for the Fayetteville-Springdale-Rogers, AR-MO Urban Area, for MPO transportation planning purposes, as shown on the map attached hereto and made a part hereof, is hereby approved.

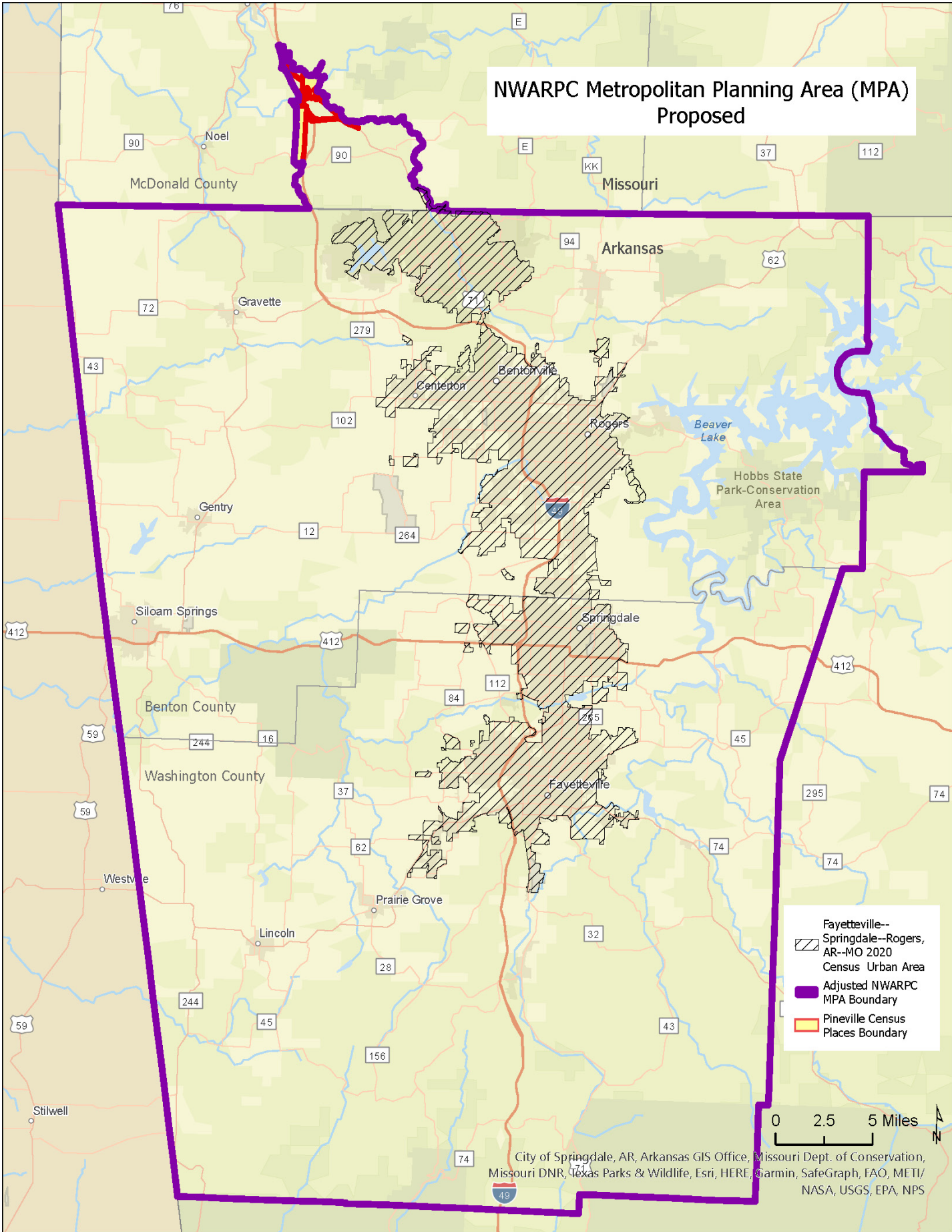
SECTION 2. That the execution of appropriate documents to effectuate MPO participation by Missouri jurisdictions is hereby approved.




PASSED AND APPROVED BY THIS _____ DAY OF _____, 2023

Judge Barry Moehring, Chair, NWARPC

ATTEST: _____

NWARPC Metropolitan Planning Area (MPA) Proposed

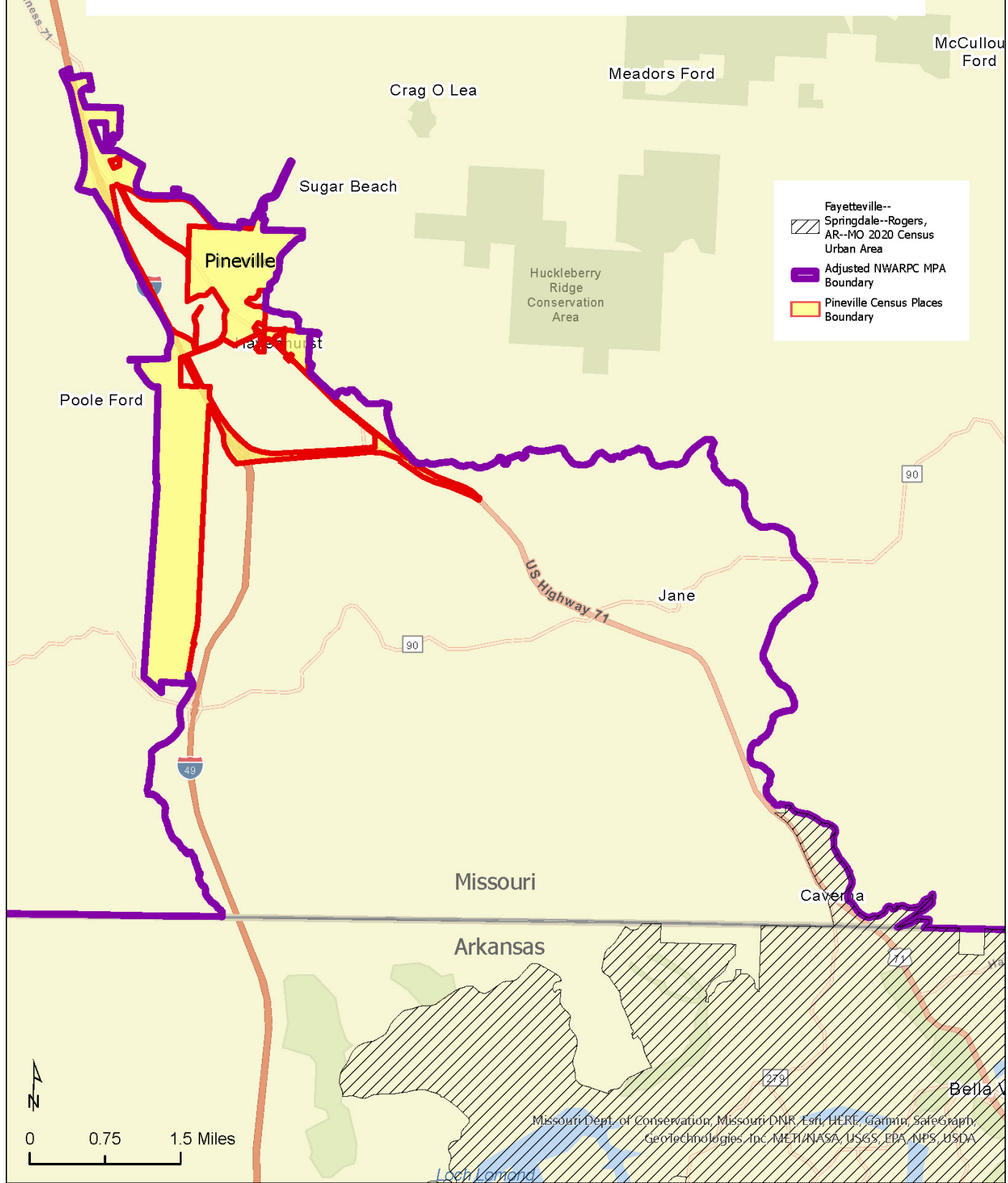


-  Fayetteville--Springdale--Rogers, AR--MO 2020 Census Urban Area
-  Adjusted NWARPC MPA Boundary
-  Pineville Census Places Boundary

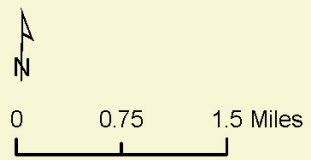
0 2.5 5 Miles

City of Springdale, AR, Arkansas GIS Office, Missouri Dept. of Conservation, Missouri DNR, Texas Parks & Wildlife, Esri, HERE, Garmin, SafeGraph, FAO, METI/NASA, USGS, EPA, NPS

Missouri Portion of the NWARPC Metropolitan Planning (MPA) Area Proposed



- Fayetteville--Springdale--Rogers, AR--MO 2020 Census Urban Area
- Adjusted NWARPC MPA Boundary
- Pineville Census Places Boundary



Missouri Dept. of Conservation, Missouri DNR, Esri, HERE, Garmin, SafeGraph, GeoTechnologies, Inc., METI/NASA, USGS, EPA, NPS, USDA