

Northwest Arkansas

2040 METROPOLITAN

TRANSPORTATION

PLAN



Prepared by the Northwest Arkansas Regional Planning Commission in cooperation with the Arkansas State Highway and Transportation Department, Missouri Department of Transportation, Federal Highway Administration and Federal Transit Administration

March 23, 2016

Northwest Arkansas Regional Planning Commission Membership:

City of Avoca
City of Bella Vista
Benton County
City of Bentonville
City of Bethel Heights
City of Cave Springs
City of Centerton
City of Decatur
City of Elkins
City of Elm Springs
City of Farmington
City of Fayetteville
City of Garfield
City of Gateway
City of Gentry
City of Goshen
City of Gravette
City of Greenland
City of Highfill
City of Hindsville
City of Huntsville
City of Johnson
City of Lincoln
City of Little Flock
City of Lowell
McDonald County, Missouri
City of Pea Ridge
City of Pineville, Missouri
City of Prairie Grove
City of Rogers
City of Siloam Springs
City of Springdale
City of Springtown
City of Sulphur Springs
City of Tontitown
Washington County
City of West Fork
Arkansas Highway and Transportation Department (AHTD)
Missouri Department of Transportation (MODOT)
Beaver Water District
Ozark Regional Transit Inc.
Razorback Transit
University of Arkansas

CONTENTS

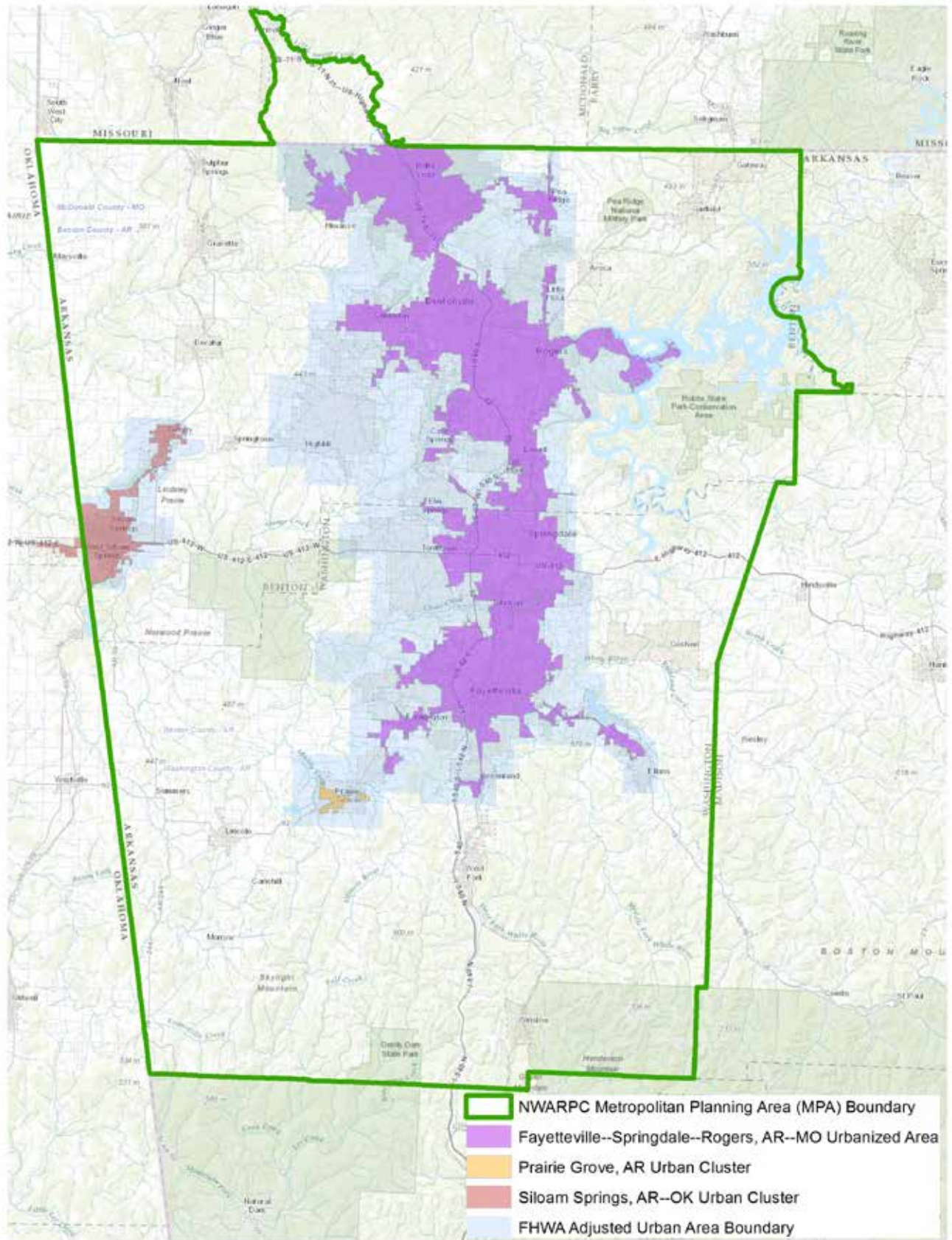
CHAPTER 1	INTRODUCTION
CHAPTER 2	VISION AND GOALS
CHAPTER 3	POPULATION AND LANDUSE
CHAPTER 4	PUBLIC INVOLVEMENT
CHAPTER 5	ENVIRONMENTAL JUSTICE
CHAPTER 6	ENVIRONMENT
CHAPTER 7	TRAVEL PATTERNS AND TRAVEL FORECASTING
CHAPTER 8	FACILITY DESIGN, MANAGEMENT AND OPERATIONS, AND SYSTEM PERFORMANCE
CHAPTER 9	TRANSPORTATION PROJECTS AND FUNDING
CHAPTER 10	BICYCLE AND PEDESTRIAN FACILITIES
CHAPTER 11	PUBLIC TRANSPORTATION
CHAPTER 12	INTERMODAL, FREIGHT, RAIL, AND AIR
	APPENDIX A: COMMUNITY OUTREACH PLAN; 2040 PUBLIC OPINION SURVEY (ENGLISH AND SPANISH); PUBLIC COMMENTS
APPENDICES	APPENDIX B: ENVIRONMENTAL JUSTICE ANALYSIS; NORTHWEST ARKANSAS RAZORBACK REGIONAL GREENWAY
	APPENDIX C: ACCESS MANAGEMENT STANDARDS MODEL ORDINANCE

APPENDIX D: FFY 2016-2020 TRANSPORTATION
IMPROVEMENT PROGRAM (TIP)

APPENDICES

APPENDIX E: BRIDGES AND STRUCTURES IN THE
METROPOLITAN PLANNING AREA

APPENDIX F: NORTHWEST ARKANSAS ACTIVE
TRANSPORTATION FACILITIES; NORTHWEST
ARKANSAS HERITAGE TRAIL PLAN



METROPOLITAN PLANNING AREA BOUNDARY

NARTS MISSION

The mission of the Northwest Arkansas Regional Transportation Study (NARTS) is to “Develop and Maintain a Regional Transportation Plan for the Metropolitan Area”.

In January 2003 the TAC recommended that the NARTS area be expanded to include the entire two-county region. The Policy Committee approved the expansion and the Governor signed the request in August 2003. Therefore, the NARTS area is truly a reflection of the region as a whole, which is rapidly urbanizing.

REGIONAL TRANSPORTATION GOAL

“Provide a comprehensive intermodal transportation system which most efficiently serves the human and economic needs of the metropolitan area and Northwest Arkansas region.”

LOCAL AUTHORITY

This plan was developed to provide a regional transportation plan for Northwest Arkansas. Part of the plan includes recommendations for transportation improvements and infrastructure. Local development requirements and transportation decisions will be the responsibility of the applicable governing authority.

PUBLIC PARTICIPATION PLAN PROCEDURE

The Northwest Arkansas 2040 Metropolitan Transportation Plan (MTP) was developed using the procedures outlined in Chapter X., A. of the Public Participation Plan (see Chapter 4 Public Involvement in the MTP for greater detail).

The Draft MTP was posted on the NWARPC website on December 21, 2015. An email announcing that the Draft MTP was available for review was sent to the Technical Advisory Committee (TAC) and NWARPC/Policy Committee on January 4, 2016.

A Display Ad announcing the Final Public Forum and 30-day Public Comment Period was published in the Arkansas Democrat Gazette on January 14, 2016. A Legal Notice was published in the same paper announcing the Final Public Forum, Public Comment Period, TAC and NWARPC/Policy Committee meetings where the Draft MTP would be discussed. A Display Ad was published on January 14, 2016 in the La Prensa Newspaper containing the same information as the Legal Notice.

A Final Public Forum was held at the NWARPC, located on the bus route, on January 21, 2016. A 30-day Public Comment Period commenced on January 23, 2016 and ran through February 21, 2016. No significant public comment was received.

A Legal Notice was published in the Arkansas Democrat Gazette on March 10, 2016 announcing a TAC meeting and NWARPC/Policy Committee meeting in which each committee would vote on approval of the Draft Northwest Arkansas 2040 Metropolitan Transportation Plan. A Display Ad containing the same information was published on March 10, 2016 in the La Prensa Newspaper.

The TAC met on March 17, 2016 and unanimously voted to forward the Draft Northwest Arkansas 2040 Metropolitan Transportation Plan to the NWARPC/Policy Committee for approval. The NWARPC/Policy Committee met on March 23, 2016 and voted unanimously to approve the 2040 Northwest Arkansas Metropolitan Transportation Plan.

This notice is in accordance with the 2040 NWA Metropolitan Transportation Plan, the Moving Ahead for Progress in the 21st Century (MAP-21) Act and Fixing America's Surface Transportation (FAST) Act, in cooperation with local agencies, the Arkansas State Highway and Transportation Department, the Missouri Department of Transportation, the Federal Highway Administration, and the Federal Transit Administration. This report was funded in part through grant(s) from the Federal Highway Administration, the Federal Transit Administration, and/or the U.S. Department of Transportation. The views and opinions of the agency expressed herein do not necessarily state or reflect those of the U.S. Department of Transportation.

NORTHWEST ARKANSAS REGIONAL PLANNING COMMISSION NOTICE OF NONDISCRIMINATION

The Northwest Arkansas Regional Planning Commission (NWARPC) complies with all civil rights provisions of federal statutes and related authorities that prohibit discrimination in programs and activities receiving federal financial assistance. Therefore, the NWARPC does not discriminate on the basis of race, sex, color, age, national origin, religion or disability, in the admission, access to and treatment in NWARPC's programs and activities, as well as the NWARPC's hiring or employment practices. Complaints of alleged discrimination and inquiries regarding the NWARPC's nondiscrimination policies may be directed to Celia Scott-Silkwood, AICP, Regional Planner – EEO/DBE (ADA/504/Title VI Coordinator), 1311 Clayton, Springdale, AR 72762, (479) 751-7125, (Voice/TTY 7-1-1 or 1-800-285-1131) or the following email address: cscott-silkwood@nwarpc.org. This notice is available from the ADA/504/Title VI Coordinator in large print, on audiotape and in Braille. If information is needed in another language, contact Celia Scott-Silkwood. Si necesita informacion en otro idioma, comuniqese Celia Scott-Silkwood, cscott-silkwood@nwarpc.org.

Acronyms Used in this Plan

AADT	Average Annual Daily Traffic
A&M	Arkansas and Missouri Railroad
ACS	American Community Survey
ADA	Americans with Disabilities Act of 1990
ADAAG	Disabilities Act Accessibility Guidelines
ADT	Average Daily Traffic
AHTD	Arkansas State Highway and Transportation Department
ALOP	Annual Listing of Obligated Projects
ASSHTO	American Association of State Highway and transportation Officials
ATRI	American Transportation Research Institute
BFC	Bicycle Friendly Community
BMP	Best Management Practices
BPR	Bureau of Public Roads
BRT	Bus Rapid Transit
CAP	Connecting Arkansas Program
CI	Congestion Index
COP	Community Outreach Plan
CMAQ	Congestion Mitigation and Air Quality Improvement Program
CMP	Congestion Management Process
CSDC	Census State Data Center
CSS	Context Sensitive Solutions (aka as Context Sensitive Design)
CTTP	Census Transportation Planning Package
DA	Drive Alone
DOT	Department of Transportation
DMVT	Daily Vehicle Miles Traveled
EJ	Environmental Justice
E's (5)	Engineering, Enforcement, Education, Evaluation, Encouragement
EPA	Environmental Protection Agency
FARS	Fatality Analysis Reporting System
FAST ACT	Fixing America's Surface Transportation Act
FFY	Federal Fiscal Year
FHWA	Federal Highway and Transportation Administration
FTA	Federal Transit Administration
GIS	Geographic Information System
HBO	Home-Based Other Trips
HBW	Home-Based-Work Trips
HBSB	Home-Based-Shop/Personal Business Trips
HBSC	Home-Based School Trips
HBU	Home-Based-University/College Trips
HCM	Highway Capacity Manual
HHTS	Household Travel Survey
HSIP	Highway Safety Improvement Program
HTP	Heritage Trail Plan
IPF	Iterative Proportional Fitting
IRP	Interstate Rehabilitation Program
ISTEA	Intermodal Surface Transportation Efficiency Act
ITS	Intelligent Transportation System
KNR	Kiss-and-Ride/drop-off
KSC	Kansas City Southern Railroad
LB	Local bus
LEP	Limited English Proficiency Plan
LOS	Level of Service
LPA	Locally Preferred Alternative
LR	Light Rail
LRP	Long Range Plan
MAP-21	Moving Ahead for Progress in the 21st Century
MODOT	Missouri Department of Transportation
MPA	Metropolitan Planning Area
MPO	Metropolitan Planning Organization

MS4	Municipal Separate Storm Sewer Systems
MSA	Metropolitan Statistical Area
MTP	Metropolitan Transportation Plan
NARTS	Northwest Arkansas Regional Transportation Study
NBI	National Bridge Inventory
NBIS	National Bridge Inspection Standards
NHB	Non-Home-Based Trips
NHBW	Non-Home Based Work Trips
NHS	National Highway System
NHPP	National Highway Performance Program
NHTS	National Household Travel Survey
NLCD	National Land Cover Database
NTD	National Transit Database
NWA	Northwest Arkansas
NWADG	Northwest Arkansas Democrat Gazette
NWARPC	Northwest Arkansas Regional Planning Commission
ORT	Ozark Regional Transit
PB	Parsons Brinckerhoff
PNR	Park-and-Ride
POP	Program of Projects
PPP	Public Participation Plan
PRMSE	Percent Root Mean Square Error
PRT	Personal Rapid Transit
ROW	Right of Way
RMSE	Root Mean Square Error
RPC	Regional Planning Commission
RT	Razorback Transit
RTP	Recreational Trails Program
SAFEEA-LU	Safe, Accountable, Flexible, Efficient Transportation Equity Act: A Legacy for Users
SH	State Highway
SR2	Shared ride of two
SR3+	Shared ride of three or more
SRTS	Safe Routes to School Program
STIP	Statewide Transportation Improvement Program
STP	Surface Transportation Program
STP-A	Surface Transportation Program – Attributable Funds
STBGP	Surface Transportation Block Grant Program
STBGP-A	Surface Transportation Block Grant Program - Attributable
TAC	Technical Advisory Committee
TAP	Transportation Alternatives Program
TAD	Traffic Analysis Districts
TAZ	Traffic Analysis Zone
TCSP	Transportation, Community, and System Preservation Program
TDM	Transportation Demand Management (aka Mobility Management)
TDP	Transit Development Plan
TIP	Transportation Improvement Plan
TIGER II	Transportation Investment Generating Economic Recovery Grant Program
TLFD	Trip Length Frequency Distributions
TOD	Transit Oriented Development
TMA	Transportation Management Area
TMIP	Travel Model Improvement Program
TRB	Transportation Research Board
TEA-21	Transportation Equity Act for the 21 st Century
UACES	University of Arkansas, Division of Agriculture Cooperative Extension Service
UALR	University of Arkansas at Little Rock
UPWP	Unified Planning Work Program
U.S.DOT	United States Department of Transportation
UZA	Urbanized Area
VDF	Volume Delay Function
VHT	Vehicle Hours Traveled
VMT	Vehicle Miles Traveled