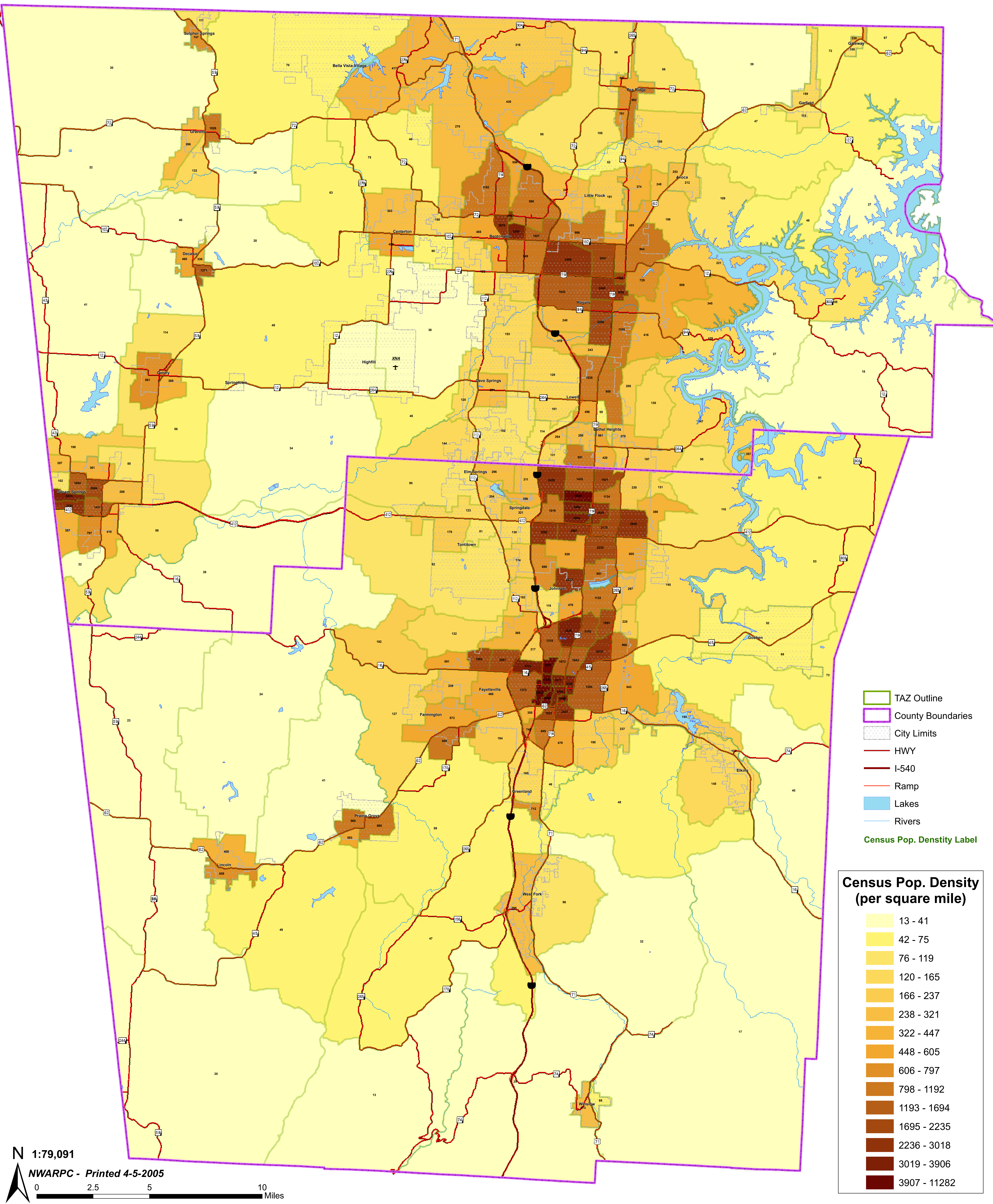


Census 2000 Population per square mile



- TAZ Outline
- County Boundaries
- City Limits
- HWY
- I-540
- Ramp
- Lakes
- Rivers
- Census Pop. Density Label

Census Pop. Density (per square mile)

13 - 41
42 - 75
76 - 119
120 - 165
166 - 237
238 - 321
322 - 447
448 - 605
606 - 797
798 - 1192
1193 - 1694
1695 - 2235
2236 - 3018
3019 - 3906
3907 - 11282